

Mineral chemistry and P-T conditions of the Karakaya volcanites at Kırka-Afyon-Isparta volcanic province, Afyon, Turkey

İrem Aksoy¹ Yaşar Kibici²

¹Kütahya Dumlupınar University, Department of Geological Engineering
Evliya Çelebi Campus, 10th km on the Tavşanlı Road, Kütahya / Turkey
E-mail: irem.arat@dpu.edu.tr; iremarat@gmail.com

²Bilecik Seyh Edebali University, Construction Technology Department
Pelitözü Neighborhood, Fatih Sultan Mehmet Boulevard No:27, 11100 Central/BİLECİK, Turkey

ABSTRACT

The Kırka-Afyon-Isparta Volcanic Province (KAIVP) is one of the best known regions in Turkey for the origin and petrological evolution of the high potassium volcanic activity. The temporal and spatial variability of volcanic rocks in the region exerts significant control over their geochemical diversity. Alkaline and ultrapotassic volcanic rocks of the Afyon volcanism are the first products of asthenospheric origin after the orogenesis in western Anatolia. We have determined the mineralogical and petrographic properties of the Karakaya volcanites surrounding Afyon with the help of microprobe analyses. Estimated thermobarometers are calculated. The Karakaya volcanites have been grouped into four different units according to their their mineralogical, petrographic and geochemical characteristics: Seydiler ignimbirite, basaltic trachyandesite, trachyandesite, trachyte and lamproite. Most samples display hypocristalline porphyritic texture, whereas samples of lamproite unit have a holocrystalline texture. Generally, volcanic units also exhibit some textural evidence of disequilibrium crystallisation, such as sieve texture and corrosion in plagioclase phenocrysts, zoning and inclusions in clinopyroxene phenocrysts. Mineral thermobarometric estimations in all suites were tested on clinopyroxene and feldspar compositions, considering different authors' approaches. Values of temperatures and pressure range from 1105 to 1273°C and 5.6 to 12.2kbar, respectively. The temperature and pressure values calculated from the mineral-melt associations in the volcanics suggest that the Afyon Volcanites were affected by magma mixing processes and crystallised at different depths during the transport of magma.

KEYWORDS | Mineral Chemistry. Thermobarometry. KAIVP. Karakaya volcanites. Western Turkey.

INTRODUCTION

Western Anatolia is divided into five tectonic zones related to the closure of Neotethys Ocean, from north to south the Tavşanlı Zone, the Afyon Zone, the Menderes Massif, the Lycian Nappes and the Taurides (Okay and Tüysüz, 1999). Basal units of these tectonic zones were intruded in some regions by volcanic activity at different ages. These regions are West Anatolian Volcanic Province

(WAVP), Kırka-Afyon-Isparta Volcanic Province (KAIVP) with N-S extension and Central Anatolia Volcanic Province (CAVP) (Fig. 1) (Akal, 2003, 2008; Aydar *et al.*, 1998; Besang *et al.*, 1977; Çoban and Flower, 2006; Dilek and Altunkaynak, 2009; Elitok *et al.*, 2010; Francalanci *et al.*, 2000; Keller, 1983; Keller and Villari, 1972; Prelević *et al.*, 2010, 2012, 2015; Savaşçın and Oyman, 1998; Sunder, 1982; Yağmurlu *et al.*, 1997).

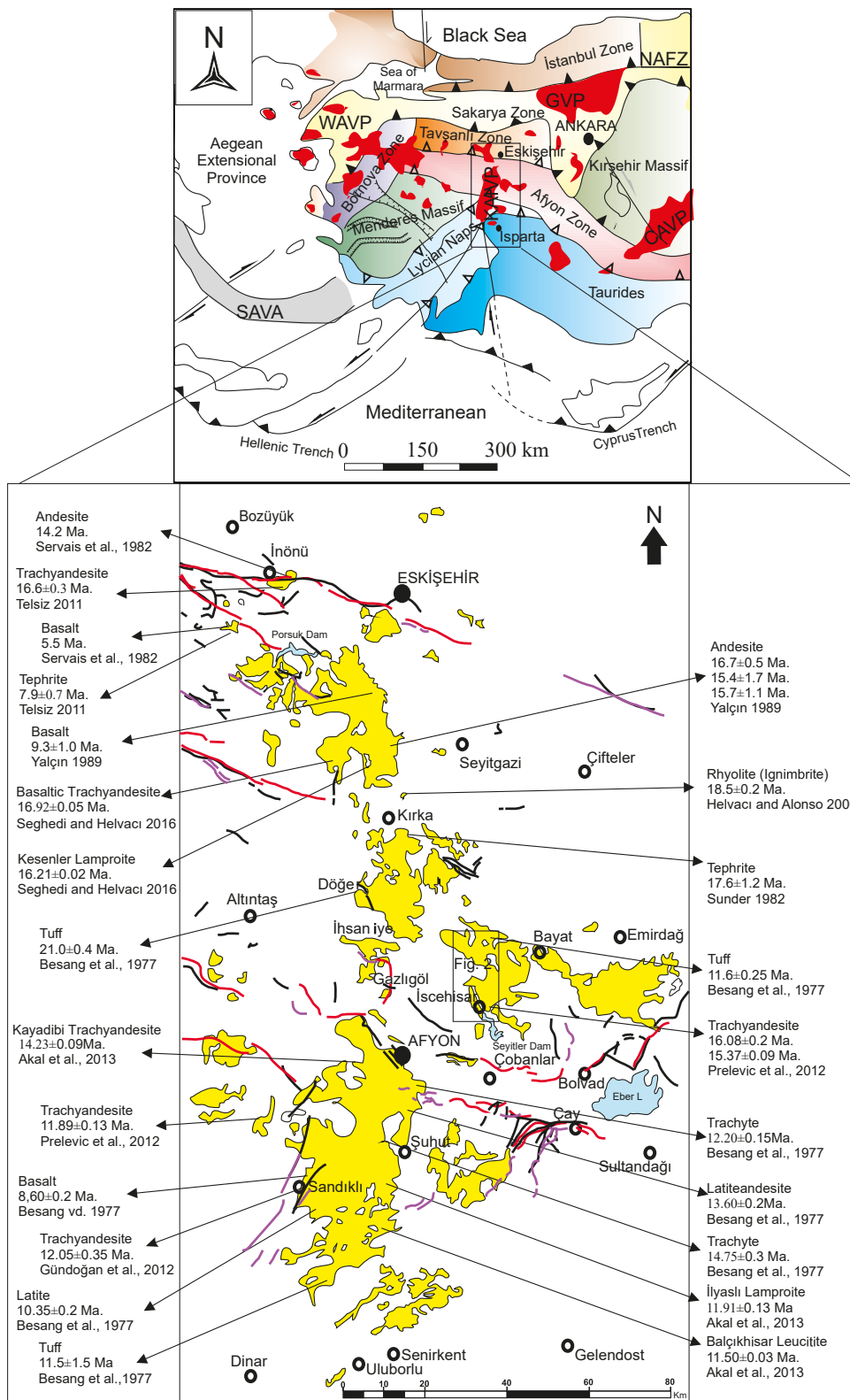


FIGURE 1. Simplified tectonic map (upper) of western Anatolia (Turkey) with the distribution of early-middle Miocene volcanic rocks (modified from Ersoy *et al.*, 2012; Okay and Tüysüz, 1999), and distribution of volcanic rocks (lower) in the Kirka-Afyon-Isparta Volcanic Province (KAIVP) indicating their ages and references, (Akal *et al.*, 2013; Besang *et al.*, 1977; Gündoğan *et al.*, 2012; Helvacı and Alonso, 2000; Prelević *et al.*, 2012; Seghedi and Helvacı, 2016; Servais, 1982; Telsiz, 2011; Yalçın, 1989). SAVA: South Aegean Volcanic Arc, WAVP: West Anatolia Volcanic Province, KAIVP: Kirka-Afyon-Isparta Volcanic Province, GVB: Galatian Volcanic Province, CAVP: Central Anatolia Volcanic Province. (for lower figure yellow areas - Neogene volcanic rocks; black lines - possible Quaternary faults and lineations; red lines - Holocene faults; purple lines - Quaternary faults).

The KAIVP extends from Kırka (Eskişehir) in the north to the south of Isparta (Fig. 1). It is approximately 250km long, it has a N-S trend, and developed during the early Miocene through Pliocene times. The volcanic rocks exposed along the KAIVP are more alkaline (K-rich) than the Miocene rocks in the WAVP (Akal, 2003, 2008; Alıcı *et al.*, 1998; Aydar, 1998; Besang *et al.*, 1977; Çoban and Flower, 2006; Dilek and Altunkaynak, 2009; Elitok *et al.*, 2010; Floyd *et al.*, 1998; Francalanci *et al.*, 2000; Helvacı and Alonso, 2000; Keller, 1983; Keller and Villari, 1972; Platevoet *et al.*, 2008; Prelević *et al.*, 2010, 2012, 2015; Savaşçın and Oyman, 1998; Sunder, 1982; Yağmurlu *et al.*, 1997).

Volcanic units exposed along the KAIVP have extremely variable chemical compositions. Calc-alkaline, ultra-potassic and shoshonitic volcanic units in Kırka consist of rhyolites, trachytes, basalts, and associated pyroclastic rocks emplaced at 21.0-16.1Ma (Besang *et al.*, 1977; Francalanci *et al.*, 2000; Seghedi and Helvacı, 2016). They become more potassic towards the south. Alkaline-rhyolitic, latitic and trachytic lavas, domes and ultrapotassic volcanism in the Afyon area formed between 14 and 8Ma (Dilek and Altunkaynak, 2010; Prelević *et al.*, 2012). Phonolitic tephrites, tephritic-phonolites and lamproitic rocks developed at about 4,70- 4,07My and are located south of Isparta (Savaşçın and Oyman, 1998) (Fig. 1).

The southward increase in volcanism is linked to different amounts of K enrichment, levels of Si saturation, and isotope and trace element compositions (Dilek and Altunkaynak, 2007; Francalanci *et al.*, 2000; Prelević *et al.*, 2012). Prelević *et al.* (2015) emphasised the asthenosphere-lithosphere interaction using new Pb, Sr, and Nd radiogenic isotope and trace element data. The Cenozoic magmatism in the KAIVP represents a geological phenomenon with a complex evolution, intricately shaped by a variety of processes, including accretionary tectonics and collisional events, extensional tectonics, subduction-zone processes, and collision-induced mantle dynamics, such as slab breakoff and delamination, alongside asthenospheric upwelling.

In this context, understanding the interplay of these geological processes is crucial for elucidating the magmatic history of the region. By examining the geochemical signatures and temporal patterns of magmatism, we can gain insights into the tectonic evolution and dynamics of the KAIVP. This study focuses on the mineralogical and petrographic characteristics of the Karakaya volcanites, in the north-eastern region of Afyon in the KAIVP. The mineral chemistry data are utilised to ascertain the physicochemical conditions, specifically parameters such as Pressure (P) and Temperature (T), aiming to elucidate the magma emplacement and crystallisation conditions.

Furthermore, a generic evolutionary model is presented to delineate the plausible processes within the magma chambers.

Geological Setting

The origin, formation and evolution of the Oligo-Miocene volcanism that developed under the post-collision extensional regime in western Anatolia are still under debate (Akal, 2003, 2008; Alıcı *et al.*, 1998; Aydar, 1998; Besang *et al.*, 1977; Çoban and Flower, 2006; Dilek and Altunkaynak, 2009; Elitok *et al.*, 2010; Floyd *et al.*, 1998; Francalanci *et al.*, 2000; Helvacı and Alonso, 2000; Keller, 1983; Keller and Villari, 1972; Platevoet *et al.*, 2008; Prelević *et al.*, 2010, 2012, 2015; Savaşçın and Oyman, 1998; Sunder, 1982; Yağmurlu *et al.*, 1997). It is accepted that the region has considerable mantle heterogeneity (Akal, 2008; Akal *et al.*, 2013; Aydar *et al.*, 2003; Güleç, 1991; Savaşçın and Güleç, 1990). Neogene volcanics in the area should be studied more systematically to evaluate the models discussed.

These areas affected by extensional tectonic regimes are commonly observed in plutonic and volcanic regions with orogenic geochemical characteristics. It is considered that the orogenic character of these magmatic and volcanic formations is the result of the convergence that had previously occurred along the Hellenic arc (Savaşçın and Güleç, 1990; Yılmaz, 1989). While western Turkey experienced an extensional regime, alkaline and ultrapotassic volcanic units with an asthenospheric geochemical signature in the Afyon area already occurred along the Kırka-Afyon-Isparta Province (Akal *et al.* 2013; Pe-Piper and Piper 2001; Savaşçın and Oyman 1998; Yağmurlu *et al.* 1997).

The study area is located in the Afyon Zone of Okay (1984), the Bolkardağı Union of Özgül (1976) and the Anatolid-Torid Platform of Şengör and Yılmaz (1981). The Afyon Zone is represented by a Paleozoic-Mesozoic shelf-type sequence of the Taurides (Okay, 1984). Volcanic units forming the main subject of this study are exposed in various areas of Afyon. The Paleozoic and Cenozoic rock units are located around İncehisar in the north-northeast of Afyon (Fig. 2). The Afyon metamorphics (Doğanlar schist, İncehisar marble, and Deliktaştepe metakonglomera) described by Metin *et al.* (1987) form the basement and are covered by the lower Miocene Yeniköy Formation (Saraç, 2003) with an angular unconformity. The Seydiler ignimbrite rests unconformably on the Yeniköy Formation. The Seydiler ignimbrite forms the pyroclastic base of the Karakaya volcanites.

The Karakaya volcanites, first defined by Metin *et al.* (1987) as 'Karakaya basalt', represent the product of Afyon volcanism, which continues intermittently throughout

the lower-middle Miocene, with lava compositions of trachybasalt, basaltic trachyandesite, and trachyandesite. Erkan *et al.* (1996) named the volcanic rocks located north of Afyon as ‘northern volcanics’ and interpreted these volcanics as lava spills. Aydar (1998) indicated that these lavas are the products of lamproitic magma and explained their formation as lava flows and dikes. The age of the unit was determined as 11.60Ma by Besang *et al.* (1977) and 15.37–16.08Ma by Prelević *et al.* (2012). Effusive volcanism products formed the lower-middle Miocene Karakaya volcanites over the Seydiler ignimbrite, which can be subdivided into four units according to their mineralogical, petrographic and geochemical properties (Aksoy, 2019).

The Karakaya volcanites include basaltic trachyandesite, trachyandesite, trachyte and lamproite units (Fig. 3). They grade laterally and vertically with the Miocene lacustrine deposits of the Gebeceler Formation (Akpınar Limestone). The Erdemir Formation, consisting of an irregular alternation of conglomerate, sandstone and mudstone, rests on the lacustrine sediments of the Gebeceler Formation. Alluvium blankets all the units mentioned above.

ANALYTICAL METHODS

Fresh samples of most typical volcanic rocks from each volcanic unit were chosen to classify the rocks and

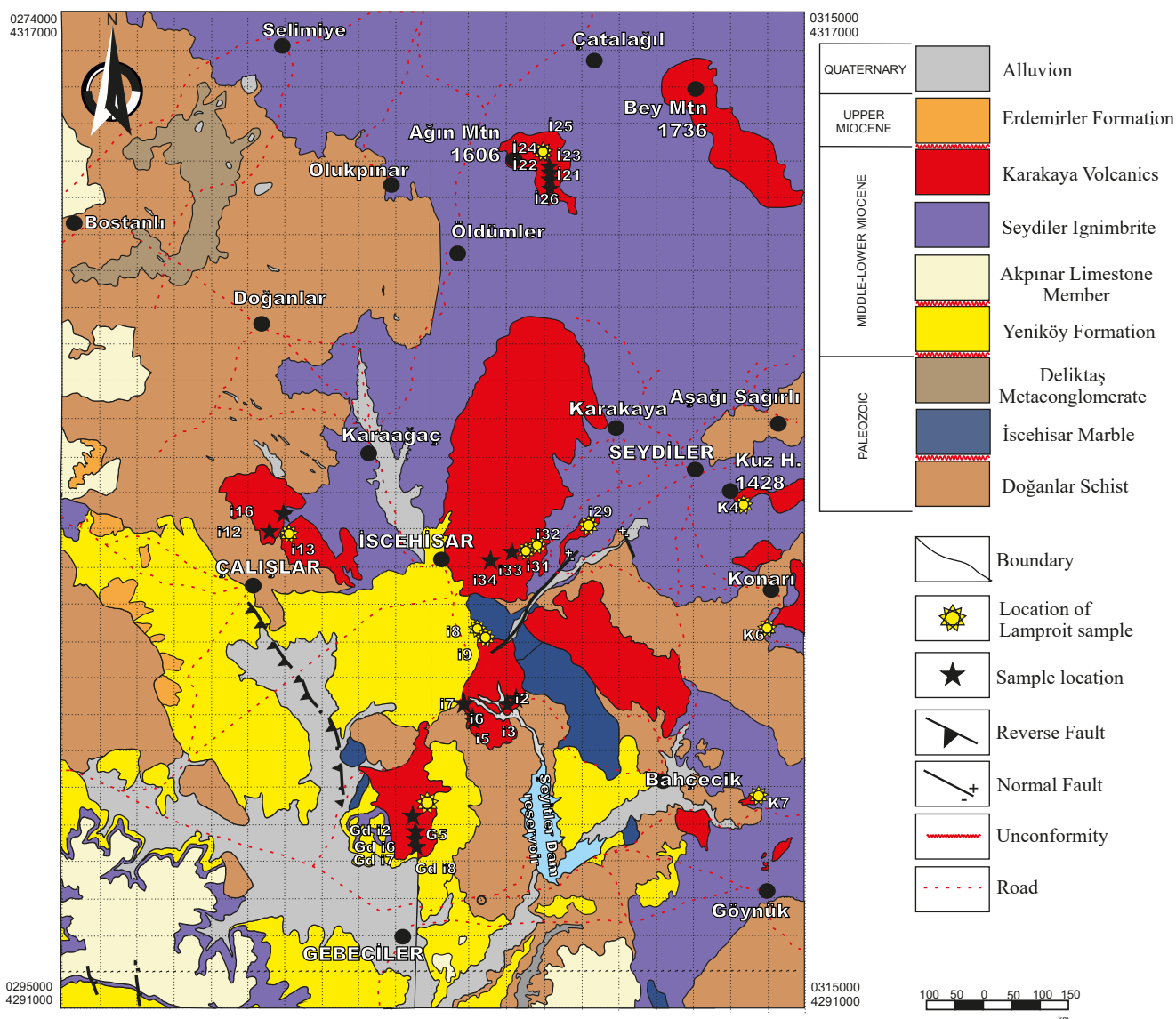


FIGURE 2. Geological map of the study area (modified from the General Directorate of Mineral Research and Exploration (MTA) 1:100,000 scale geological map of Turkey).

determine their mineralogical and petrographic properties, and mineral proportions. After determining the rock composition in the Karakaya volcanites, samples of basaltic trachyandesite, trachyandesite, trachyte and lamproite were selected to analyse mineral phases. Thin sections were examined in detail under a Nikon Eclipse LV100POL polarised microscope at the Optical Microscope Laboratory of the Geological Engineering Department of Kütahya

Dumlupınar University, and photomicrographs were taken with an OLYMPUS E-330 camera.

Whole-rock major element compositions of representative volcanic rock samples were determined by an Inductively Coupled Plasma Atomic Emission Spectrometry (ICP-AES) following lithium metaborate/tetraborate fusion and dilute nitric acid digestion at ACME analytical laboratories (Canada).

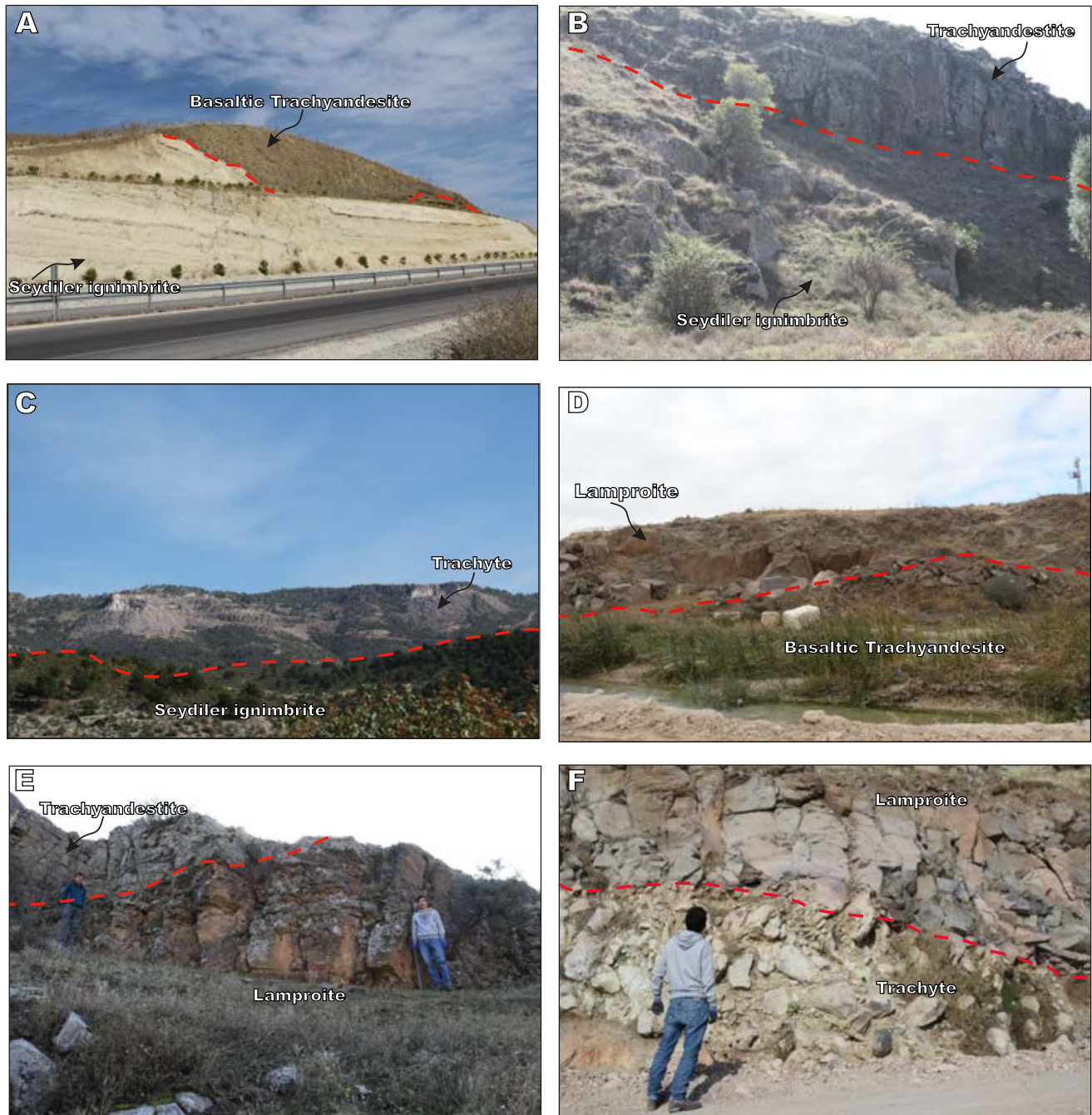


FIGURE 3. Field photographs of lower-middle Miocene Karakaya volcanites. A) Basaltic trachyandesite overlying the Seydiler Ignimbrite, B) Trachyandesite overlying the Seydiler Ignimbrite. C) Trachyte overlying the Seydiler Ignimbrite. D) Lamproite on top of basaltic trachyandesite. E) Trachyandesite on top of lamproite. F) Lamproite on top of trachyte.

Scanning electron microscopy was done using an FEI NanoSEM 650 scanning electron microscope with integrated EDAX energy-dispersion spectrometer device at Kütahya Dumlupınar University Advanced Technologies Center (ILTEM). For qualitative mineral chemistry analysis, beam properties were set to 20kV and 20nA°. Moreover, electron microprobe (EPMA) analyses were performed on polished thin sections at the Ankara University Earth Sciences Application and Research Center (YEBİM) using a JEOL brand JXA – 8230 model device containing 5 Wavelength Dispersive Spectrometers (WDS). Operating conditions were 20kV acceleration voltage, 10nA° electrode and dot size. Detection limits for Na, Mg, Al, Si, Fe, Mn, K, Ca and Ti were below 0.04%. Natural oxide and mineral reference materials were used for calibration and measurements. Matrix effects were corrected using the ZAF software provided by JEOL. The carbon coating of polished sections was made using the Quorum Q150T ES machine in YEBİM.

RESULTS

Mineralogy and Petrography of the Karakaya volcanites

The lavas in the Karakaya volcanic region exhibit a great array of mineralogical and petrographic characteristics. To classify and categorise these lavas, we followed the classification scheme proposed by the International Union of Geological Sciences (IUGS) as outlined in [Le Maitre et al. \(2002\)](#). Additionally, we used the systematics specifically designed for potassic rocks and lamproites by [Mitchell and Bergman \(1991\)](#) and [Woolley et al. \(1996\)](#). These classification frameworks provided a comprehensive and standardised approach for characterising the various types of lavas encountered in the Karakaya volcanic region, facilitating a systematic analysis of their geological features and formation processes. The textural and mineralogical characteristics of representative samples from these types of lavas are summarised in [Supplementary file IA-H](#).

The Karakaya volcanites were previously identified and mapped as a single unit of aphyric lavas ([Dedeoglu and Yilmaz, 2016](#)). Recently, they have been grouped into four volcanic units based on mineralogical, petrographic and geochemical characteristics. These are basaltic trachyandesite, trachyandesite, trachyte and lamproite units ([Aksoy, 2019](#)). Except for the lamproite unit, which overlies the Seydiler Ignimbrite, the contacts between the units could not be determined due to surface alterations and the high-speed train road excavations.

The Basaltic Trachyandesite unit

The representative rocks of The Basaltic Trachyandesite unit occur as horizontal lava flows, forming a wide plateau

extending N-S across the study area, including Isehisar. These rocks are thought to be the earliest, first-generation “lava flow” in the evolution of Köroğlu Caldera, defined by [Aydar et al. \(1998\)](#). They are spheroidally altered to reddish black in many areas, and have a dense vesicular texture that indicates flow direction. All samples from this unit have a hypocrySTALLINE porphyritic texture ([Fig. 4A](#)). The unit includes two different phenocryst mineral combinations reflected in olivine content. One mineral association consists mainly of feldspar + clinopyroxene + olivine ± Fe-Ti oxides ± accessory ilmenite, while the other contains feldspar ± clinopyroxene ± Fe-Ti oxides ± accessory ilmenite. Groundmass mineralogy is plagioclase + pyroxene ± opaque minerals and transparent glass. The most important characteristic of this unit is that all elongate microlites in the glass, such as feldspar, are oriented in the direction of flow (trachytic texture).

Feldspars, occurring as phenocrysts (1.0-2.4vol%) and microlites (43.70-55vol%), are alkali feldspars (sanidine) and plagioclase. Euhedral to subhedral plagioclase crystals generally occur as phenocrysts and microlites in the groundmass. Some phenocrysts show albite twinning, zoning, sieve texture and embayment. Clinopyroxenes are usually present as euhedral phenocrysts (5.10-9.10vol%), showing predominantly zoned texture and Carlsbad twinning. Most of them have sieve and corrosion textures. Clinopyroxene and plagioclase phenocrysts also display typical glomeroporphyritic textures. Fe-Ti oxides such as ilmenite and magnetite were observed as microphenocrysts (0.2-5.4vol%).

The Trachyandesite unit

The trachyandesite unit is the product of lava flows, is exposed in the northeast of Çalışlar village and oriented approximately NW-SE. This unit has blackish and dark grey colours and spheroidal alteration without vesiculation in many areas. The mineral assemblage and texture (hypocrySTALLINE porphyritic texture) of trachyandesitic rocks are similar to those of the basaltic trachyandesites ([Fig. 4B](#)). However, they have a higher content of transparent glass (14.80-19.70vol%) and thinner, smaller microlites (63.30-67.80vol%) (hyalopilitic texture). Samples are characterised by a subhedral to euhedral phenocryst assemblage of feldspar + clinopyroxene + olivine ± Fe-Ti oxides ± accessory ilmenite embedded in a microcrystalline matrix composed mainly of plagioclase + pyroxene ± opaque minerals and transparent glass. Clinopyroxene (10.5-12.60vol%) and plagioclase (2vol%) phenocrysts display typical glomeroporphyritic textures.

The Trachyte unit

The Trachyte unit rocks are exposed in a few areas of small lava flows found in the mountains of Ağın and

Bey, close to Çatalağıl village (Fig. 4C). The colour of this unit range from grey to dark grey and textures are primarily massive. The trachyte unit is composed of microphenocrysts of clinopyroxene + phlogopite + Fe-Ti oxides + accessory apatite embedded in a pilotaxitic groundmass exhibit porphyritic textures (Fig. 4C). The groundmass contains clinopyroxene microlites (9.60-22.30vol%), K feldspar microlites (33.60-48.40vol%) and glass (13.40-15.80vol%). Clinopyroxene generally occurs as euhedral phenocrysts (13.0-18.70vol%), most of them exhibiting sieve and corrosion textures. Phlogopite typically appears as euhedral phenocrysts (7.10-10.70vol%), although it also occurs as altered anhedral grains without cleavage, grains with distinct cleavage, and grains that have become wholly turned opaque.

The Lamproite unit

The Lamproite unit represents according to Aydar *et al.* (1998) a second-generation lava flow (extra-caldera extrusions). This unit differs from the other units by having reddish and brown to dark brown colours, flow structure and occasional vesicular magmatic enclaves (which have not been studied) ranging up to 3 and 7cm in size. Dense alteration is pervasive and does not permit us to examine the enclaves. Combined optical microscopic and Back-Scattered Electron (BSE) imaging revealed that this unit has typical lamproitic texture. It is represented by mainly clinopyroxene (14.50-17.90vol%) + olivine (5.70-10.90vol%) + phlogopite (0.70-7.10vol%) + Fe-Ti oxides (2.7-3.9vol%) phenocrysts, which are enclosed in mainly holocrystalline groundmass sanidine (Fig. 4D).

Whole-Rock Major Elements and Classification

Chemical analyses of samples from the Karakaya volcanites provided representative whole-rock major oxide compositions and CIPW norm values (See Supplementary file IB). The concentrations of major elements were recalculated on an anhydrous basis normalised to 100 percent by weight, and these values were used in the classifications. Petrographic investigations are consistent with specific basaltic samples having high Loss On Ignition (LOI) values up to 6.10wt%, which are probably connected to iddingsitization and serpentinization as well as to partial alteration of feldspars to clay minerals. These high values of LOI imply that Karakaya volcanites are variably affected by weathering or secondary alteration processes. We have therefore tested whether or not the element abundances of the rocks reflect their primary characteristics by applying the Weathering Index of Parker (WIP; Parker, 1970), Chemical Index of Alteration (CIA; Nesbitt and Young, 1982), and Plagioclase Index of Alteration (PIA; Fedo *et al.*, 1995; an alternative to CIA). The values of the CIA and PIA from the basaltic to andesitic rocks are less than 50 (Supplementary

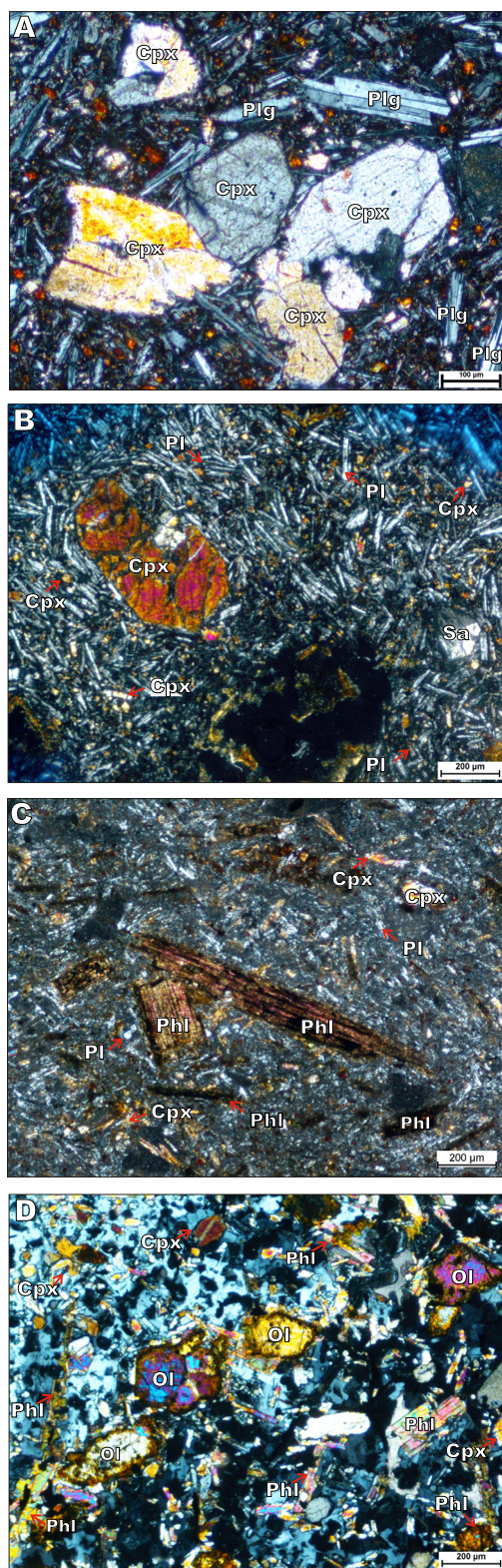


FIGURE 4. Thin section photomicrographs of some representative samples of Karakaya volcanites (in cross-polarised light). A) HypocrySTALLINE porphyritic texture in the basaltic trachyandesite. B) HypocrySTALLINE porphyritic texture in the trachyandesite. C) Small crystals embedded in a pilotaxitic groundmass in the trachyte. D) Lamproitic texture in the lamproite. cpx: clinopyroxene; pl: plagioclase; ol: olivine; phl: phlogopite, sa: sanidine.

file IB). WIP values of these samples vary between 85.27 and 121.02. The WIP and CIA values are above 80 and below 55, respectively, indicating that most lavas are fresh and have not suffered notable alteration or weathering (Fig. 5A). Fresh magmatic rocks follow a “magmatic trend” on the FMW ternary plot of Ohta and Arai (2007), and all the Karakaya volcanites analysed extend in this trend (Fig. 5B). Thus, overall, these alteration indices, together with the petrographic observations, suggest that the whole rock geochemical data can be used with confidence in the following discussion.

The volcanic rocks show a wide compositional range from basaltic trachyandesite to rhyolite with SiO₂ contents of 51.56–63.12wt% and MgO contents of 1.71–12.13 wt% (the rhyolites representing the Seydiler ignimbrite are not mentioned in this study, but only included in the classification diagram) (Supplementary file IB). The Karakaya volcanites have been categorised on the Total Alkali-Silica diagram (TAS) (after Le Bas et al., 1986) (Fig. 6A).

According to the TAS diagram, the samples from the Karakaya volcanites predominantly fall within the basaltic trachyandesite, trachyandesite and trachyte fields (Fig. 6A). Furthermore, these volcanic samples exhibit an alkaline chemistry based on the alkaline-sub-alkaline separation line determined by Miyashiro (1978). The K₂O content of Karakaya volcanites increases from the trachyandesite unit to the lamproite unit (Fig. 6B). This observed increase in K₂O is further highlighted when examining the K₂O vs. Na₂O graph presented in Figure 6C. While the basaltic trachyandesite unit

and the trachyandesite unit show shoshonitic characteristics, the lamproite unit stands out with ultrapotassic characteristics, indicating an even more pronounced potassium content enrichment than the other units.

Volcanic rocks with MgO>3, K₂O>3 and K₂O/Na₂O>2 were defined as ultrapotassic (Foley et al., 1987). Samples from Karakaya volcanic units were assessed according to the criteria recommended by Foley et al. (1987). Major element analyses of lamproite unit in Karakaya volcanites indicate 3.03<MgO<12.13%, 5.38<K₂O<9.44%, 2.04<K₂O/Na₂O<7.52. The mentioned element contents and ratios show that samples from the lamproite unit in the Karakaya volcanites can be classified as ultrapotassic. The samples exhibit lamproite features, taking into consideration mineralogical descriptions, mineral chemistry and geochemical data. Calculated CIPW norm values of the samples (Supplementary file IB) reflect the chemical trends noted above. Normative quartz and nepheline were calculated in most Karakaya volcanites, whereas normative plagioclase was determined in Karakaya lamproites. Moreover, all samples contain diopside, hypersthene and accessory minerals (apatite, magnetite and ilmenite).

The samples belonging to the lamproite unit fall in Roman province-type ultrapotassic rocks (Fig. 7). The lamproite unit in the Karakaya volcanites reflects an active orogenic province with low content of TiO₂ (1.22-2.18wt%) relative to the stable continental area based on the ratios of P₂O₅/TiO₂ vs. TiO₂ to characterise the geological setting of ultrapotassic rocks (Foley et al., 1987). Previous researchers also identified rocks with alkali lamprophyre and lamproite

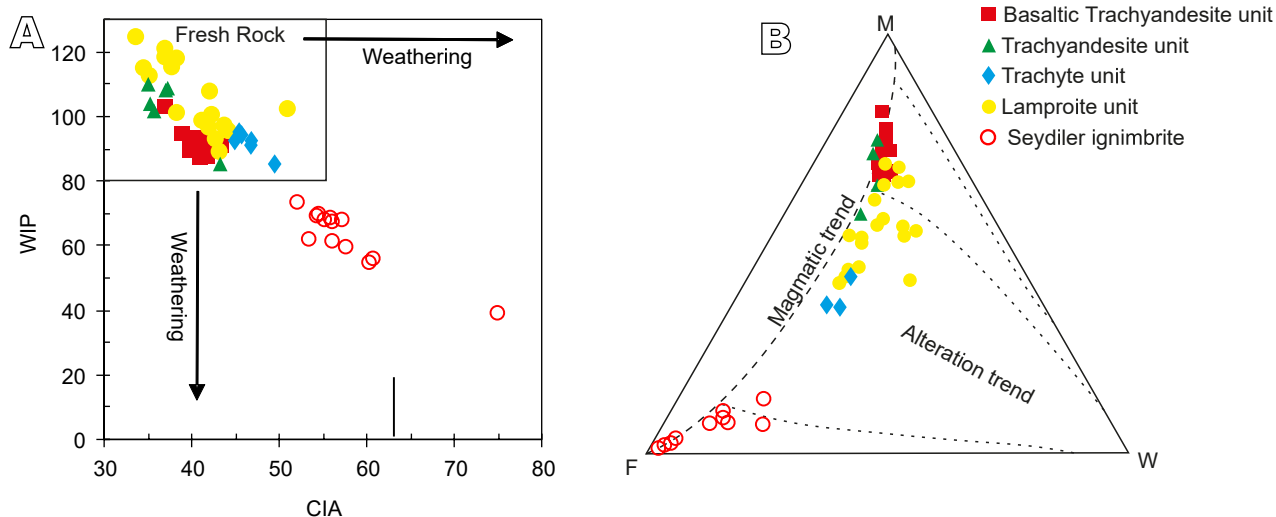


FIGURE 5. Alteration indexes and related plots for the samples. A) Chemical Index of Alteration (CIA) vs Plagioclase Index of Alteration (WIP) plot. B) FMW ternary plot of Ohta and Arai (2007). [M= -0.395 × ln(SiO₂) + 0.206 × ln(TiO₂) - 0.316 × ln(Al₂O₃) + 0.160 × ln(Fe₂O₃) + 0.246 × ln(MgO) + 0.368 × ln(CaO) + 0.073 × ln(Na₂O) - 0.342 × ln(K₂O) + 2.266; F= 0.191 × ln(SiO₂) - 0.397 × ln(TiO₂) + 0.020 × ln(Al₂O₃) - 0.375 × ln(Fe₂O₃) - 0.243 × ln(MgO) + 0.079 × ln(CaO) + 0.392 × ln(Na₂O) + 0.333 × ln(K₂O) - 0.892; W= 0.203 × ln(SiO₂) + 0.191 × ln(TiO₂) + 0.296 × ln(Al₂O₃) + 0.215 × ln(Fe₂O₃) - 0.002 × ln(MgO) - 0.448 × ln(CaO) - 0.464 × ln(Na₂O) + 0.008 × ln(K₂O) - 1.374].

compositions in the regions further south of the area (Akal, 2008; Aydar *et al.*, 2003; Prelević *et al.*, 2012, 2015). This consistency in classifying these rocks as ultrapotassic and the presence of analogous rock types in neighbouring regions further validates the findings of this study.

Figure 8A shows primitive mantle-normalised multi-element spider diagrams (Sun and McDonough, 1989). The Karakaya volcanites have a discernible depletion in elements such as Nb, Pb and Ti, but they display an enrichment in elements such as U, K and Zr. Figure 8B illustrates the chondrite-normalised rare earth element spider diagrams (Boynnton, 1984). All observed samples exhibit a decrease in abundance from light rare earth elements to heavy rare earth elements.

Mineral chemistry

Pyroxene, feldspars, olivine, micas and Fe-Ti oxides (magnetite and ilmenite) were analysed by scanning electron microscopy (SEM-EDS). A summary of representative

analyses is given in Supplementary file IC. Six oxygen atoms for pyroxene, 8 oxygen atoms for feldspars, 4 oxygen atoms for olivine, 11 oxygen atoms for micas, 4 oxygen atoms for magnetite, 3 oxygen atoms for ilmenite are used in stoichiometric calculations for mineral type.

Pyroxene

Clinopyroxenes commonly occur in almost all units as phenocrysts and groundmass phase. Phenocrysts are euhedral to subhedral, rounded and broken, unzoned or weakly zoned. Data from core to rim of the clinopyroxenes indicate only minor compositional variation in the rock groups identified. Compositional ternary Wo-En-Fs diagrams (Morimoto, 1989) (Fig. 9) indicate that clinopyroxenes are augite and diopside types according to the classification of the International Mineralogical Association (IMA). Based on ternary components normalised to 100 percent, the composition of clinopyroxene is $Wo_{35-48}En_{41-57}Fs_{4-13}$ in the basaltic trachyandesite unit, $Wo_{45-54}En_{19-50}Fs_{3-9}$ in the

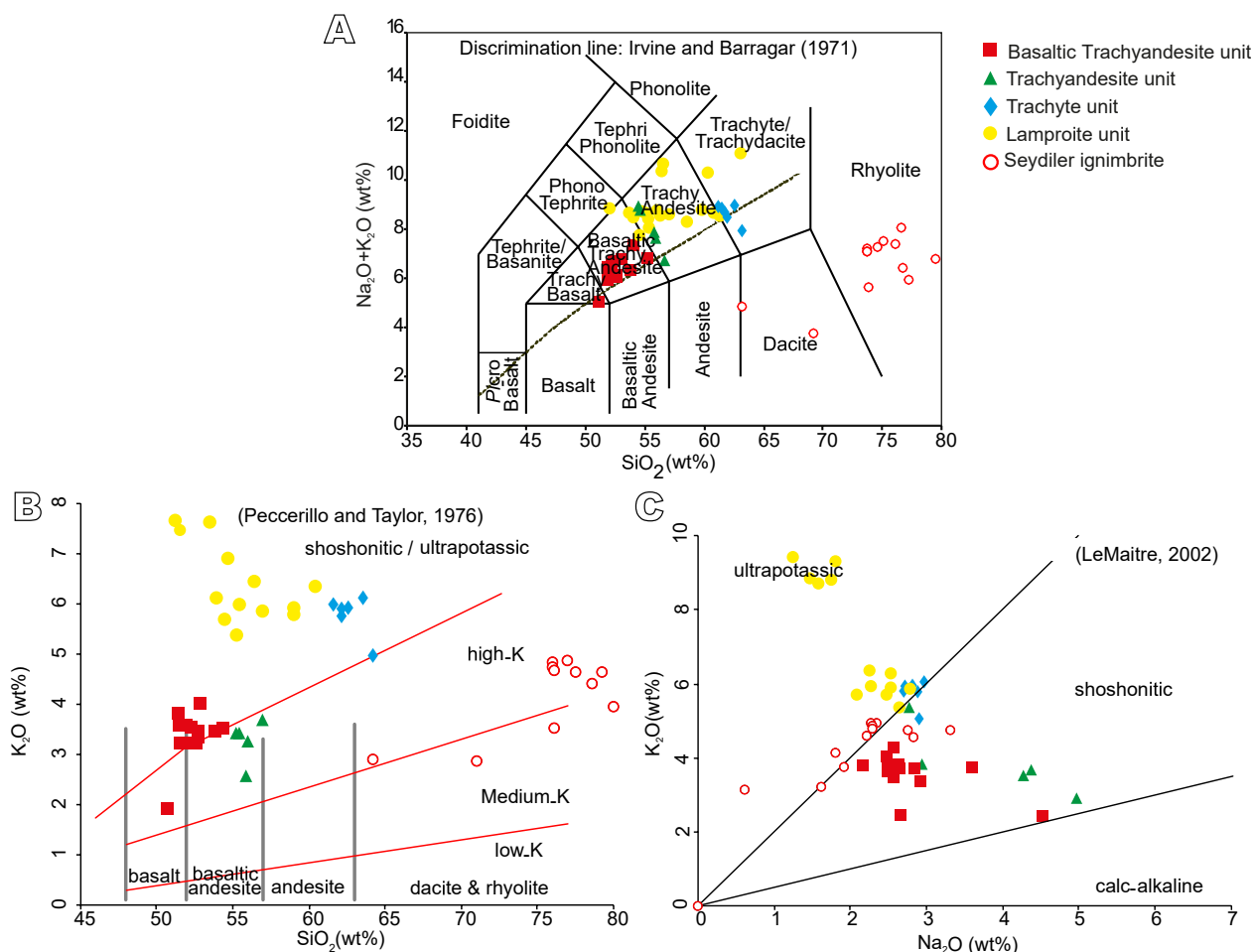


FIGURE 6. Whole-rock classification and discrimination plots of the studied rock groups. A) Classification diagram of Total Alkali-Silica (TAS). Alkaline-sub-alkaline discrimination line by Irvine and Baragar (1971). B) K₂O vs. SiO₂ plot (Peccerillo and Taylor, 1976). C) K₂O vs. Na₂O diagram (Le Maitre *et al.*, 2002).

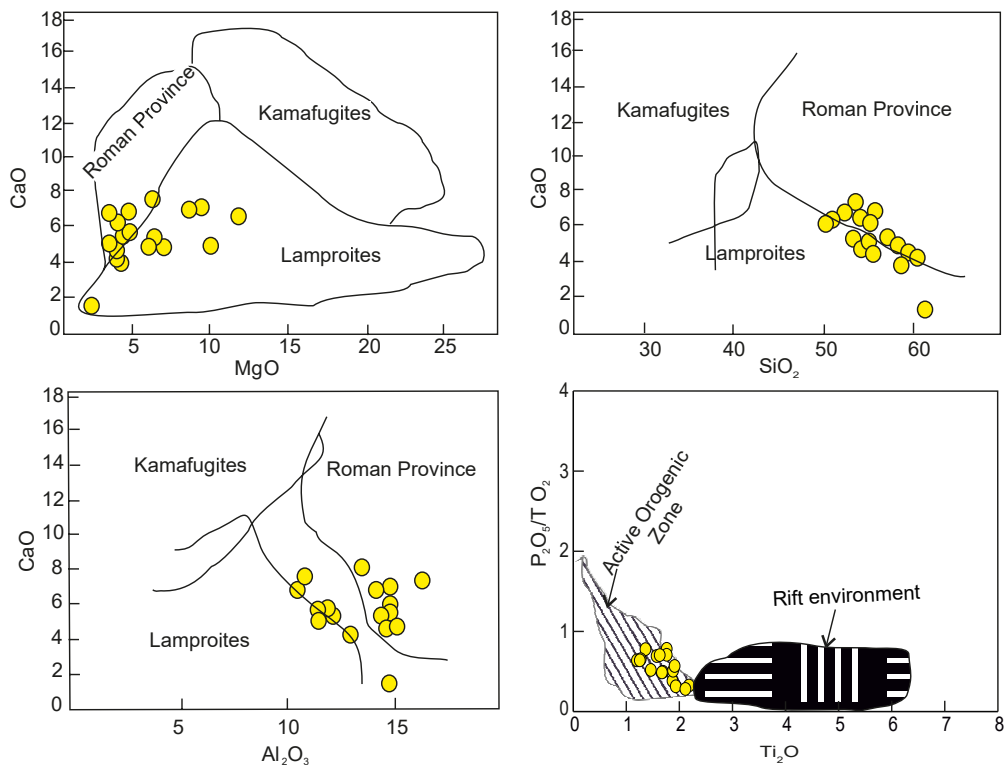


FIGURE 7. Lamproite plots on diagrams of ultrapotassic rock classification of [Foley et al., 1987](#). (Italian lamproite fields are from [Conticelli, 1998; Conticelli et al., 1992, 2002; Peccerillo et al., 1988](#). Fields are from [Duggen et al. 2005](#) and [Prelević et al. 2005](#) for Spanish and Serbian lamproites, respectively).

trachyandesite unit, $Wo_{43-65}En_{30-54}Fs_{1-8}$ in trachyte unit and $Wo_{31-52}En_{36-67}Fs_{3-13}$ in lamproite unit.

Feldspar

Feldspars occur as phenocrysts and microlites in the basaltic trachyandesite and trachyandesite units, whereas

they exist as only microlites in the trachyte and lamproite units. The feldspar phenocrysts have a wide composition range from albite to labradorite ([Fig. 10](#)). A limited number of microlites have sanidine compositions. Microlites in the trachyte and lamproite units range from $An_1Ab_9Or_{90}$ to $An_{28}Ab_{55}Or_{36}$, which are plotted in the sanidine classification of [Deer et al. \(1992\)](#).

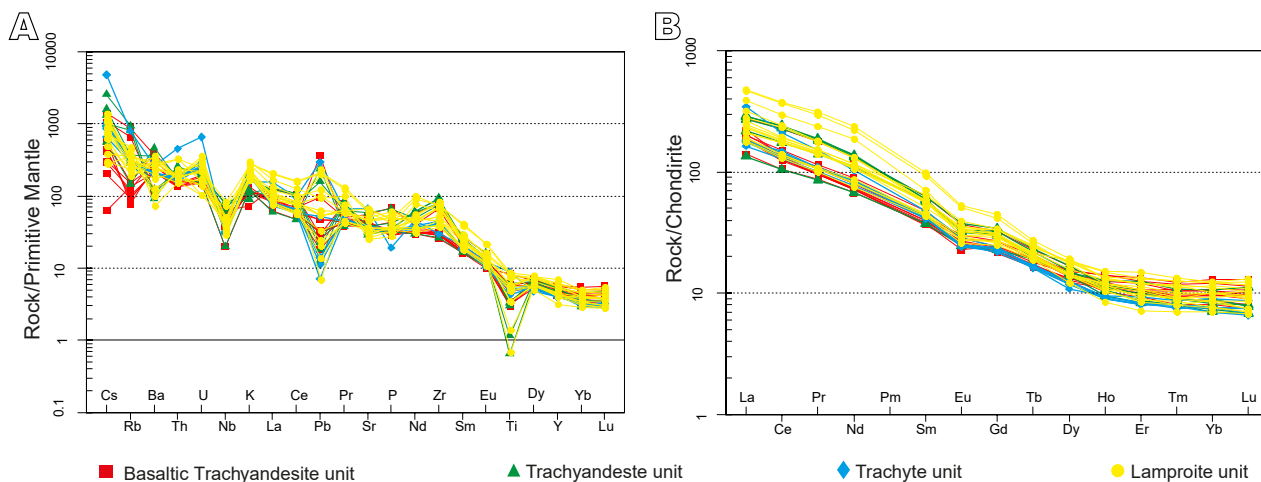


FIGURE 8. A) Primitive mantle-normalised multi-element abundances. The Primitive Mantle values are from [Sun and McDonough \(1989\)](#). B) Chondrite-normalised rare earth element patterns. Chondrite values are from [Boynton \(1984\)](#).

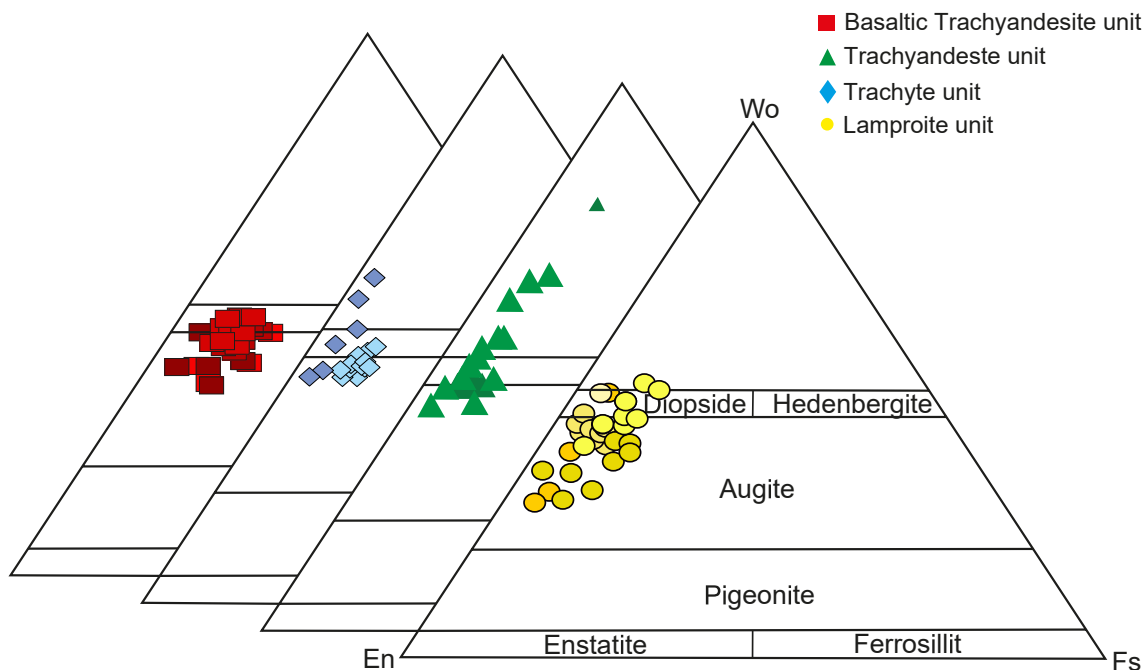


FIGURE 9. Schematic characterisation of the clinopyroxene compositions of Karakaya volcanites (Morimoto, 1989). Variably shaded colored symbols (insets) depict samples used in multiple analyses.

Olivine

Olivine phenocrysts in the basaltic trachyandesite, trachyandesite and lamproite units indicate heterogeneous compositions (Fo76–93). A common trend observed in most of the studied rocks is the systematic decrease in the Fo content of olivine from its core to the outer rim. This pattern suggests typical growth zoning, where variations in Fo content occur as the phenocrysts crystallise and evolve.

Such zoning is often a result of changes in the surrounding magma composition or temperature during crystal growth.

Brown Micas

The nomenclature of brown micas from the trachyte and lamproite units was determined based on their mineral formula. The Mg# of brown micas varies from 0.72 to 0.87 for the trachyte unit and from 0.60 to 0.82 for the lamproite

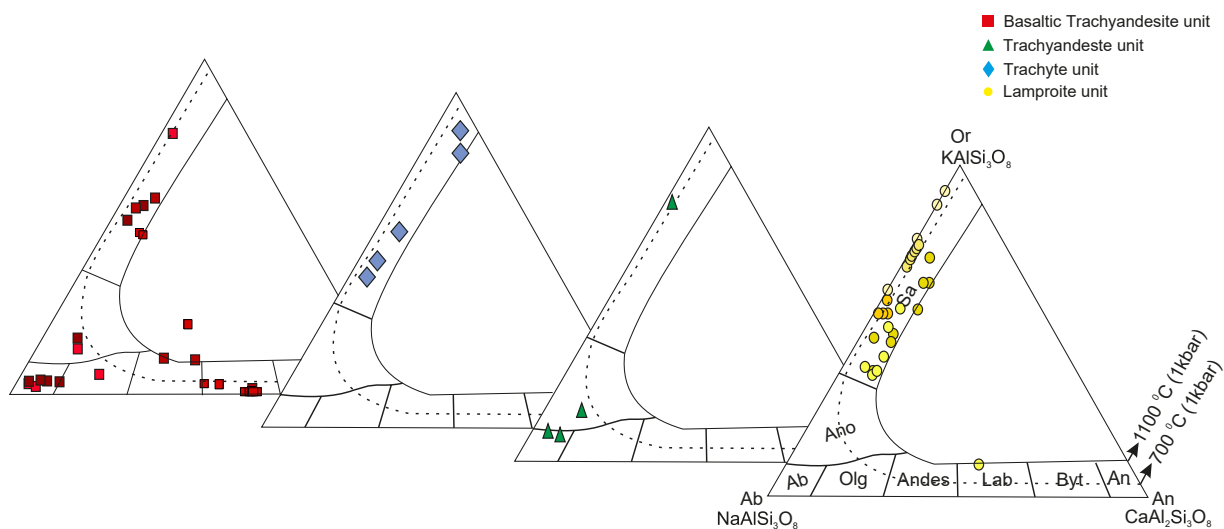


FIGURE 10. Ternary An-Ab-Or diagrams of the feldspar classification with compositions of analysed samples of Karakaya volcanites (Deer et al. 1992). (Ab: Albite, An: Anorthite, An: Anorthoclase, Andes: Andesine, Byt: Bytownite, Lab: Labradorite, Olg: Oligoclase, Or Orthoclase).

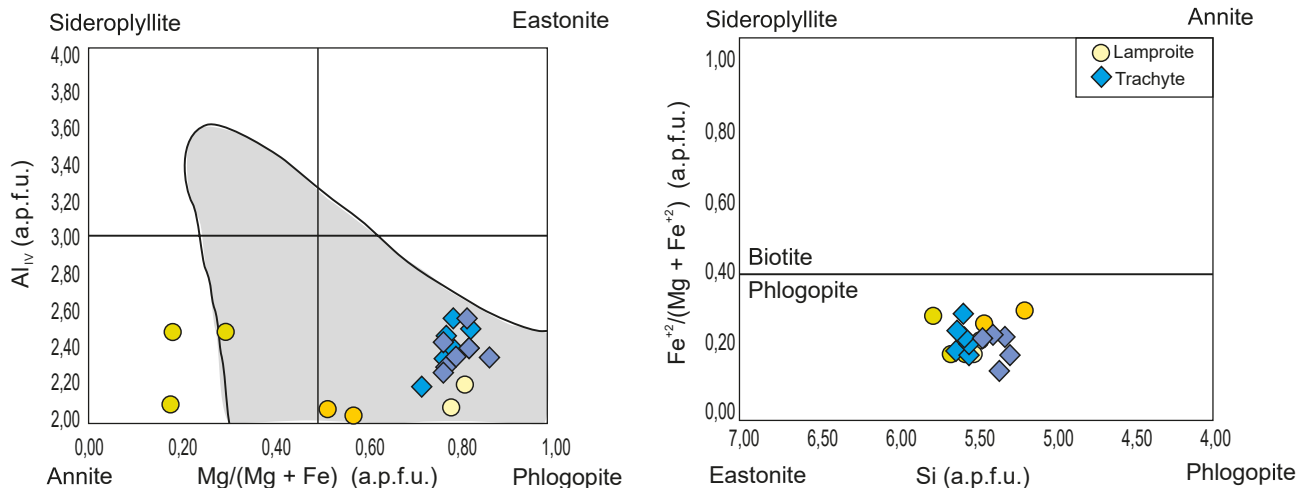


FIGURE 11. Nomenclature diagrams for mica minerals (Deer *et al.*, 1963).

unit. The annite–siderophyllite–phlogopite–eastonite quadrilateral is generally used to exhibit the Al_{IV} (apfu) and Mg# compositional relations of trioctahedral micas in magmatic rocks (Deer *et al.*, 1963). Brown micas are the product of the solid solution between phlogopite and annite end members and are close to the magnesium-rich phlogopite end (Fig. 11).

Fe-Ti Oxides

Analyses of Fe-Ti oxides, given in Supplementary file IH, indicate they are mainly ilmenite with lesser amounts of magnetite. The magnetite is actually a solid solution of ulvospinel and magnetite, and mostly compositions plot

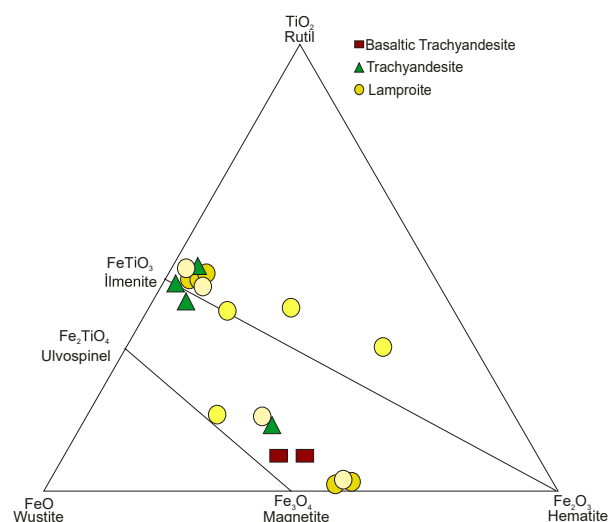


FIGURE 12. Plot of Fe-Ti oxides in the ternary TiO_2 -FeO- Fe_2O_3 diagram (Bacon and Hirschmann, 1988)

close to the magnetite end (Fig. 12). Ilmenite compositions generally fall close to the ilmenite end, along the tie-line of the ilmenite-hematite solid solution (Fig. 12).

INTENSIVE PARAMETERS

Clinopyroxene thermobarometry

Clinopyroxene-melt couples were used for geothermobarometric calculations in the Karakaya volcanites. Temperature, pressure and depth of crystallisation of volcanic rocks can be determined using clinopyroxene composition alone (Nimis, 1995; Nimis and Ulmer, 1998; Nimis and Taylor, 2000) and clinopyroxene-liquid experimental equilibria (Putirka, 2008; Putirka *et al.*, 1996, 2003). Base on the clinopyroxene barometric (Equation 32a) and thermometric (Equation 32d) equations of Putirka (2008), quantitative pressure and temperature values were calculated for the examined volcanics. Also, pressure is converted to depth using the relation $Depth(km) = 3.02P(kbar) + 5$ (Scarraw and Cox, 1995).

Results indicate that the lamproite unit has higher mean temperature, pressure and depth values than the other units (Table 1). We have converted to the clinopyroxene-melt couples geothermobarometric datasets because pyroxenes only represent the earliest crystallising phases and reflect the upper pressure and temperature limitations of magma storage.

Feldspar-liquid thermometry

Plagioclase-liquid thermometry has attracted much attention after being presented by Kudo and Weill (1970).

An equilibrium test was designed by Putirka (2008). The following values were reported in two temperature intervals based on the An–Ab exchange between plagioclase and liquid phases: KD. (An–Ab)^{plg-liq}=0.10±0.5 at T< 1,050°C and 0.27±0.11 at T>1,050°C.

Considering Putirka’s equilibrium test, we have extended our thermodynamic calculations to natural plagioclases, presumably representing the final crystallisation stage. Hence, the data obtained can be compared with the magma storage equilibrium conditions just before the magma ascent. Geothermobarometric estimations of plagioclases exhibit lower average temperatures than temperatures for clinopyroxenes (Table 2).

Disequilibrium parameters

Plagioclase, clinopyroxene, olivine, phlogopite and opaque minerals commonly occur in the Karakaya volcanites and offer many petrographic data indicating unbalanced crystallisation of magma mixture (Fig. 13). Disequilibrium textures are generally associated with magmatic events that occur during the crystallisation and development of magma. These textures may be in response to disequilibrium resulting from changes in

pressure and temperature that occur as a result of changes in the composition of the magma (Dobosi and Fodor, 1992; Lheureux and Fowler, 1994; Nixon, 1988; Ortoleva, 1990; Rutherford et al., 1993; Simonetti et al., 1996). The fluctuation in rock chemistry may be related to the mixture of mafic and felsic magmas. The mafic end member may come from the mantle, whereas the felsic end member is most likely derived from crustal contamination and magma segregation (Grove and Donnelly-Nolan, 1986).

Spongy texture is present in the plagioclases in the rocks forming the basaltic trachyandesite and trachyandesite units of the Karakaya volcanites (Fig. 13A, B), and the re-growth envelopes at the edges are the disequilibrium textures indicating the magma mixture.

The clinopyroxene phenocrysts and microphenocrysts in the lamproite unit are fragmented and eroded. The central parts of some euhedral clinopyroxene phenocrysts ultimately became opaque due to having a cavity structure. The abundant volcanic glass inclusions seen in the euhedral clinopyroxene phenocrysts, whose edges are serrated and partially surrounded by opaque minerals, indicate a dense magma mixing (Fig. 13B, C). In most of the Karakaya lamproites, a reaction texture formed by needle-like clinopyroxene microphenocrystals enveloping

TABLE 1.Temperature and pressure calculation of clinopyroxene for Karakaya volcanites

Clinopyroxene-liquid thermobarometer (Putirka, 2008)				
KD(Fe-Mg) ^{cpX-liq} =0.27±0.03		Eqn 32d* (°C)	Eqn 32a** (kbar)	Depth (km)
	Max	1188.4	5.1	20.402
Basaltic Trachyandesite unit (n=9)	Min	1161.1	2.1	11.342
	Mean	1174.3	3.6	15.872
	Max	1216.3	4.2	17.684
Trachyandesite unit (n=11)	Min	1132.3	0.2	5.604
	Mean	1189.2	2.0	11.04
	Max	1170.2	4.1	17.382
Trachyte unit (n=3)	Min	1150.3	2.3	11.946
	Mean	1161.7	3.1	14.362
	Max	1320.2	18.5	60.87
Lamproite unit (n=3)	Min	1271.4	5.9	22.818
	Mean	1264.2	13.7	46.374

*Eqn 32d: $T(K) = 93100 + 544P(kbar) / (61.1 + 36.6(X_{Ti}^{cpX}) + 10.9(X_{Fe}^{cpX}) - 0.95(X_{Al}^{cpX} + X_{Cr}^{cpX} - X_{Na}^{cpX} - X_{K}^{cpX}) + 0.395[\ln(a_{En}^{cpX})]^2)$
 **Eqn32a: $P(kbar) = 3205 + 0.384T(K) - 518\ln T(K) - 5.62(X_{Mg}^{cpX}) + 83.2(X_{Na}^{cpX}) + 68.2(X_{DiHd}^{cpX}) + 2.52\ln(X_{Al(VI)}^{cpX}) - 51.1(X_{DiHd}^{cpX})^2 + 34.8(X_{EnFs}^{cpX})^2$

the quartz xenocrysts is observed (Fig. 13D). This quartz texture indicates that it is xenocrystic and develops due to a reaction of quartz xenocrysts with magma (Vernon, 2014). This property can be explained by magma mixing and disequilibrium crystallisation. The presence of clinopyroxene, plagioclase and opaque minerals (glomeroporphyritic texture) (Fig. 13E) in the Karakaya volcanites suggest disequilibrium textures (Vernon, 2014).

DISCUSSION

Recent publications on the geology of western Anatolia have focused on topics such as geodynamic developments, P-wave tomography, geochronology, isotope geochemistry, mineralogy-petrography and geochemistry (e.g. Akal et al., 2012, 2013; Doğan-Külahcı et al., 2015; Erkül et al., 2019; Ersoy et al., 2017; Karaoğlu and Helvacı, 2014; Karaoğlu et al., 2010; Portner et al., 2018; Prelević et al., 2012, 2015; Uzel et al., 2020).

The Origins of Magma

Karakaya volcanites are represented by alkaline basaltic trachyandesites, trachyandesites, trachytes and lamproites together with calcalkaline pyroclastics in mineralogical composition within the rock assemblages belonging to the middle-late Miocene volcanism occurring in

the Eskişehir, KAIVP. The varying mineralogical and geochemical characteristics of Karakaya Volcanites indicate that the units were affected by fractional crystallisation and contamination processes. There is no significant correlation between La/Sm and Th/Nb in the Karakaya volcanic units. Increasing La/Sm with almost constant Th/Nb indicates the important role of fractional crystallisation (Fig. 14A). This crystallisation and/or different degrees of partial melting processes give Karakaya volcanites a composition ranging from basaltic trachyandesite to trachyte. The positive trend observed in the La/Nb vs. SiO₂ diagram suggests that crustal contamination and fractional crystallisation are effective in Karakaya Volcanites (Fig. 14B). Increasing Th/Yb ratios point toward a mantle source progressively metasomatized by subduction-related fluids. The high Th/Nb ratios imply a substantial subduction-related contribution during magma formation (Fig. 14C).

In general, negative Nb-Ta-Ti and positive Pb-U patterns in the normalised multi-element diagrams of the volcanites suggest that the magma source may have been affected by both crustal contamination and subduction-related enrichment to different degrees. In addition to Pb enrichment, enrichment of large ion lithophile elements is expected in subduction-related volcanic rocks. In the Karakaya volcanic units, both the enrichment in Pb content identical to the subduction

TABLE 2. Plagioclase-liquid thermometer for Karakaya volcanites

Temperature T (°C) Putirka, 2008			
	Eqn 23'	Eqn 24a''	Mean T(°C)
Basaltic	1105.2	1105.6	1105.4
Trachyandesite unit			
Trachyte unit	1163.0	1189.8	1176.4
	1140.0	1160.8	1150.4
			1163.4
Lamproite unit	1136.6	1139.6	1138.1

*Eqn23: $10^4/T(K): 6.12 + 0.257 \ln(X_{An}^{pl}/(X_{CaO}^{liq}(X_{AlO_{1.5}}^{liq})^2)(X_{SiO_2}^{liq})^2) - 3.166(X_{CaO}^{liq}) - 3.137(X_{AlO_{1.5}}^{liq}/(X_{AlO_{1.5}}^{liq} + X_{SiO_2}^{liq}) + 1.216(X_{Ab}^{pl})^2 - 2.475 \times 10^{-2}(P(kbar)) + 0.2166(H_2O^{liq})$

**Eqn24a: $10^4/T(K): 6.4706 + 0.3128 \ln(X_{An}^{pl}/(X_{CaO}^{liq}(X_{AlO_{1.5}}^{liq})^2)(X_{SiO_2}^{liq})^2) - 8.103(X_{SiO_2}^{liq}) + 4.872(X_{K_2O}^{liq}) + 1.5346(X_{Ab}^{pl})^2 + 8.661(X_{SiO_2}^{liq})^2 - 3.341 \times 10^{-2}(P(kbar)) + 0.18047(H_2O^{liq})$

environment and the depletion of Pb in some samples, support this situation in multi-element spider diagrams. Although a negative Pb anomaly indicates an asthenospheric mantle source, the behaviour of the elements in the volcanic units clearly shows the addition of subduction-related metasomatic solutions infiltrating an enriched mantle source in the Karakaya volcanites. High Mg# values in the Karakaya volcanic units indicate more mantle input during formation. The La/Yb vs Dy/Yb diagram (Fig. 14D) shows that melt production is predominantly close to the spinel stability field, with a decreasing contribution from the garnet stability field. The data indicate the development of a mixing mechanism between the units and reflect polybaric melting of the mantle source.

Magma Chamber Attributes in the Context of Tectono-Magmatic Evolution

Given the limited isotopic data available (e.g. Akal *et al.*, 2013; Besang *et al.*, 1977; Prelević *et al.*, 2015), field observations and mineralogical-petrographic characteristics of the samples described in this study suggest an early volcanic stage. The comprehensive petrographic, mineral chemistry and thermobarometric data point to complex polybaric evolutionary pathways in the Karakaya volcanites units, reflecting multiple petrogenetic processes. Based on all available data, the basaltic trachyandesite and trachyte compositions of Karakaya volcanites represent a last stage of orogenic volcanism. In contrast, trachyandesite and lamproite compositions indicates a first stage of anorogenic

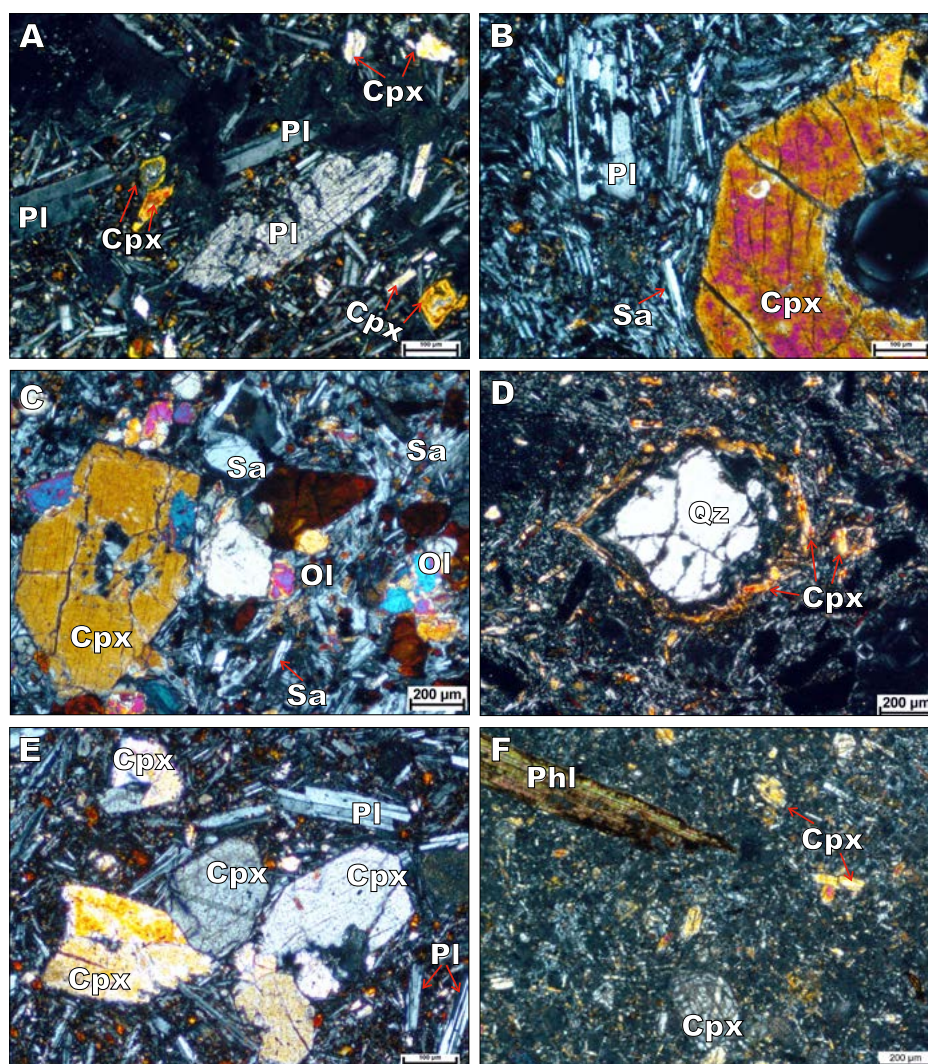


FIGURE 13. Photomicrographs of textures indicating disequilibrium crystallisation of the Karakaya volcanites (in crossed polarised light). A-B) Corroded margins and cores of plagioclase (spongy texture). B-C) Abraded margins and cores of clinopyroxenes. D) Small quartz crystal surrounded by a needle-like clinopyroxene microphenocrysts reaction belt. E) Clinopyroxene phenocrysts in the form of cumulate (glomeroporphyritic texture). F) Disequilibrium textures indicating magma mixing observed in phlogopites. (cpx: clinopyroxene; pl: plagioclase; ol: olivine; phl: phlogopite, sa: sanidine, Qz: quartz).

volcanism, with evidence of asthenospheric input. Variable crystallisation pressure and compositional variations of phenocrysts indicate a polybaric evolutionary development.

Four different magma storage levels were determined for the Karakaya volcanites. Basaltic trachyandesites, arising from shoshonitic volcanism originating in lithospheric mantle and crustal source materials in the Iscehisar region, constitute the final phase of orogenic volcanic activity. These findings indicate that deep crustal magma chambers (at an average pressure of 3.6kbar), situated at approximately 15km, were the starting point for the development of basaltic trachyandesites. This development may have been significantly influenced by open-system processes similar to melting, assimilation, storage and homogenisation. The subducting slab's rollback resulted in the asthenosphere's upwelling, acting as a heat source in the overlying mantle wedge, leading to crustal uplift and expansion. This process potentially involved partial melting of the metasomatized mantle wedge by the ascending asthenosphere and, concurrently, partial melting of the lower crust due to the ascent of the asthenosphere. The magmas derived from lithospheric mantle and crustal partial melting may have subsequently mixed in varying proportions, indicating the presence of a magma chamber responsible for the trachyte unit at an average depth of approximately 14km and a mean pressure of 3.1kbar. However, it can be argued that the extension of the Seydiler Ignimbrite due to a caldera

system was formed by the accumulation of the melts that emerged in the continental crust in an early period in the upper crust. This extension regime, which evolved with the late mixing of magmas of lithospheric mantle and lower crustal origin, suggests that it may have preceded the tear of the subducting oceanic slab. The geochemical transition from orogenic to anorogenic is due to the increased role of the lithosphere-asthenosphere interaction of the Afyon lavas. At the same time, volcanism is directly related to the location of the slab tearing as heat transfer from the uplifted asthenosphere triggers magmatism (Prelević *et al.*, 2015). The trachyandesite and lamproite units are probably related to the slab tearing that developed in the later period and were predominantly produced by melting in the mantle source. This suggests that the magma chamber that produced the lamproite unit was formed at an average pressure of 13.7kbar at a depth of approximately 46km. After magma ascent, the formation of a trachyandesite-producing magma chamber at a mean pressure of 2kbar and a depth of about 11km may have been caused by processes such as assimilation, fractional crystallisation and contamination or mixing with basaltic trachyandesite-producing magma. Alkaline volcanic rocks of different compositions in the Afyon volcanic complex indicate a slab-tearing event (Bilgiç Gencer *et al.*, 2020).

The data provided in this work suggest that, consistent with Prelević *et al.* (2015), the Karakaya volcanic

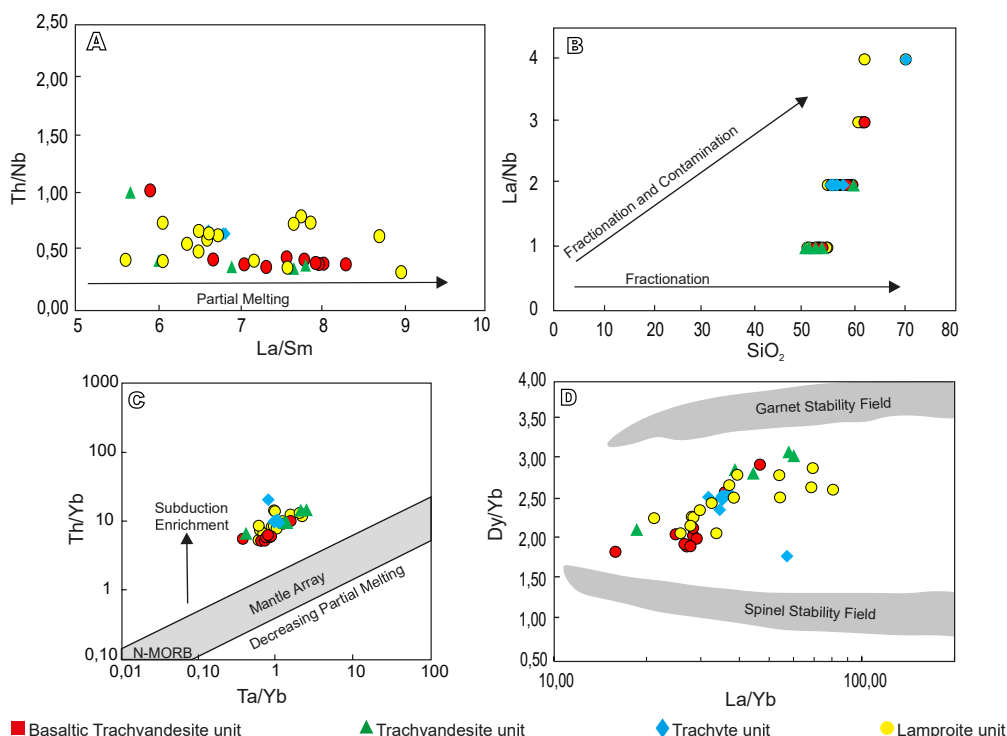


FIGURE 14. Variation diagrams for A) Th/Nb vs. La/Sm. B) La/Nb vs. SiO₂. C) Th/Yb vs. Ta/Yb. D) La/Yb vs. Dy/Yb. Fields of melt compositions for melting in the garnet and spinel peridotite stability fields are from Prelević *et al.* (2012).

units developed as separate volcanic units with distinct compositions not affiliated with a shared parental magma by fractional crystallisation. The role of assimilation of crustal rocks is of limited importance, and most of the geochemical diversity of lavas is due to mantle processes. Karakaya Volcanites developed along multiple differentiation pathways from different parental magmas.

CONCLUSION

The Karakaya volcanites have been grouped according to their mineralogical, petrographic and geochemical properties. They comprise basaltic trachyandesite, trachyandesite, trachyte and lamproite units. According to geochemical data the basaltic trachyandesite and trachyandesite units are shoshonitic in character, whereas the trachyte and lamproite units are ultrapotassic. All the pyroclastic rocks of the Seyitler ignimbrite are in the rhyolitic and high-potassium calc-alkaline series.

In the investigated volcanic rocks, melting along and corrosion at crystal edges and opaque mineral inclusions are detected in clinopyroxene crystals. In contrast, textural features such as sieve texture and abrading are evident in plagioclase crystals, indicating a disequilibrium between minerals and melts. In light of data from textural and mineral chemistry, it can be said that more than one petrogenetic event played an essential role in developing volcanic rocks.

The olivines in the Karakaya volcanites are forsteritic, and the pyroxenes found in the basaltic trachyandesite samples are augitic. However, both augite and diopside structures were detected in the pyroxenes of the trachyandesite samples. Biotites are classified only as phlogopite in mica minerals of the basaltic trachyandesite and trachyandesite samples. The composition of albite and sanidine was discovered in mineral chemistry studies on feldspars.

Based on the values of temperature and pressure calculated from the mineral-melt associations in the investigated volcanics, it is concluded that different types of mineral associations (magma mixture) may have crystallised into varying depths during the magma transport.

ACKNOWLEDGMENTS

This study is part of the PhD project of İrem Aksoy and has been encouraged by a research project supported by Kütahya Dumlupınar University (Project No. 2017/27). We would like to thank Yusuf Kağan Kadioğlu for providing access to the electron-microprobe facilities at the Earth Sciences Application and Research Center of Ankara

University (YEBİM) and to Kıymet Deniz for her help on the mineral analyses. The authors sincerely thank M. Serkan Akkiraz and Mehmet Demirbilek for the English editing. We are also grateful to the editor, Michael Ort, for his editorial work, and to Scott Hughes and an anonymous referee for their constructive comments and suggestions, which greatly improved the manuscript.

REFERENCES

- Akal, C., 2003. Mineralogy and geochemistry of melilitite leucitites, Balçıkhisar, Afyon (Turkey). *Turkish Journal of Earth Sciences*, 12, 215-239.
- Akal, C., 2008. K-richrichterite-olivine-phlogopite-diopside-sanidine lamproites from the Afyon volcanic province, Turkey. *Geological Magazine*, 145, 570-585. DOI: <https://doi.org/10.1017/S0016756808004536>
- Akal, C., Candan, O., Koralay, O.E., Oberhänsli, R., Chen, F., Prelević, D., 2012. Early Triassic potassic volcanism in the Afyon Zone of the Anatolides/Turkey: Implications for the rifting of the Neo-Tethys. *International Journal of Earth Sciences*, 101, 177-194. DOI: <https://doi.org/10.1007/s00531-011-0654-2>
- Akal, C., Helvaci, C., Prelević, D., van den Bogaard, P., 2013. High-K volcanism in the Afyon region, western Turkey: From Si-oversaturated to Si-undersaturated volcanism. *International Journal of Earth Sciences*, 102, 435-453. DOI: <https://doi.org/10.1007/s00531-012-0809-9>
- Aksoy, İ., 2019. Petrology and petrogenesis of volcanic rocks in Iscehisar (Afyon) region. PhD Thesis. Dumlupınar University, 176pp.
- Alici, P., Temel, A., Gourgaud, A., Kieffer, G., Gündoğdu, M.N., 1998. Petrology and geochemistry of potassic rocks in the Golcuk area (Isparta, SW Turkey): genesis of enriched alkaline magmas. *Journal of Volcanology and Geothermal Research*, 85, 423-446. DOI: [https://doi.org/10.1016/S0377-0273\(98\)00065-1](https://doi.org/10.1016/S0377-0273(98)00065-1)
- Aydar, E., 1998. Early Miocene to Quaternary evolution of volcanism and the basin formation in western Anatolia: a review. *Journal of Volcanology and Geothermal Research*, 85, 69-82. DOI: [https://doi.org/10.1016/S0377-0273\(98\)00050-X](https://doi.org/10.1016/S0377-0273(98)00050-X)
- Aydar, E., Bayhan, H., Gourgaud, A., 1998. Koroglu caldera, mid-west Anatolia, Turkey: Volcanological and magmatological evolution. *Journal of Volcanology and Geothermal Research* 85, 83-98. DOI: [https://doi.org/10.1016/S0377-0273\(98\)00051-1](https://doi.org/10.1016/S0377-0273(98)00051-1)
- Aydar, E., Bayhan, H., Gourgaud, A., 2003. The lamprophyres of Afyon stratovolcano, western Anatolia, Turkey: description and genesis. *Comptes Rendus Geoscience*, 335, 279-288. DOI: [https://doi.org/10.1016/s1631-0713\(03\)00049-x](https://doi.org/10.1016/s1631-0713(03)00049-x)
- Bacon, C.R., Hirschmann, M.M., 1988. Mg/Mn partitioning as a test for equilibrium between coexisting Fe-Ti oxides. *American Mineralogist*, 73, 57-61.

- Besang, C., Eckhardt, F.J., Harre, W., Kreuzer, H., Müller, P., 1977. Radiometrische altersbestimmungen an neogenen eruptivgesteinen der Türkei. *Geologisches Jahrbuch*, 25, 3-36.
- Bilgiç Gencer, S., Tatar Erkül, S., Erkül, F., 2020. Evolution of slab tearing-related high potassium volcanism: Petrogenetic data from the Emirdağ and İsehisar volcanic units. *Bulletin of the Mineral Research and Exploration*, 163, 167-185. DOI: <https://doi.org/10.19111/bulletinofmre.693353>
- Boynnton, W.V., 1984. Cosmochemistry of the Rare Earth Elements: Meteorite Studies. *Rare Earth Element Geochemistry*, 2, 63-114. DOI: <https://doi.org/10.1016/B978-0-444-42148-7.50008-3>
- Çoban, H., Flower, M.F.J., 2006. Mineral phase compositions in silica-undersaturated "leucite" lamproites from the Bucak area, Isparta, SW Turkey. *Lithos*, 89, 275-299. DOI: <https://doi.org/10.1016/j.lithos.2005.12.006>
- Coticelli, S., 1998. The effect of crustal contamination on ultrapotassic magmas with lamproitic affinity: mineralogical, geochemical and isotope data from the Torre Alfina lavas and xenoliths, Central Italy. *Chemical Geology*, 149, 51-81. DOI: [https://doi.org/10.1016/S0009-2541\(98\)00038-2](https://doi.org/10.1016/S0009-2541(98)00038-2)
- Coticelli, S., Manetti, P., Menichetti, S., 1992. Mineralogy, geochemistry and Sr-isotopes in orendites from South Tuscany, Italy: constraints on their genesis and evolution. *European Journal of Mineralogy*, 4, 1359-1376. DOI: <https://doi.org/10.1127/ejm/4/6/1359>
- Coticelli, S., D'Antonio, M., Pinarelli, L., Civetta, L., 2002. Source contamination and mantle heterogeneity in the genesis of Italian potassic and ultrapotassic volcanic rocks: Sr-Nd-Pb isotope data from Roman Province and Southern Tuscany. *Mineralogy and Petrology*, 74, 189-222. DOI: <https://doi.org/10.1007/s007100200004>
- Dedeoğlu, D., Yılmaz, K., 2016. Geochemistry of lamprophyres in Karakaya (İsehisar, Afyon), Western Anatolia, Turkey, in: IOP Conference Series: Earth and Environmental Science, 44(4), 7pp. DOI: <https://doi.org/10.1088/1755-1315/44/4/042005>
- Deer, W.A., Howie, R.A., Zussman, J., 1963. *Rock-forming Minerals: Vol. 4: Framework Silicates*. Longman, 94pp.
- Deer, W.A., Howie, R.A., Zussman, J., 1992. *An introduction to the rock-forming minerals*. Longman Scientific & Technical, 696p.
- Dilek, Y., Altunkaynak, Ş., 2007. Timing and nature of postcollisional volcanism in western Anatolia and geodynamic implications, Special Paper of the Geological Society of America, 409, 321-351. [https://doi.org/10.1130/2006.2409\(17\)](https://doi.org/10.1130/2006.2409(17))
- Dilek, Y., Altunkaynak, Ş., 2009. Geochemical and temporal evolution of Cenozoic magmatism in western Turkey: mantle response to collision, slab break-off, and lithospheric tearing in an orogenic belt. London, The Geological Society, Special Publications, 311, 213-233. DOI: <https://doi.org/10.1144/SP311.8>
- Dilek, Y., Altunkaynak, Ş., 2010. Geochemistry of Neogene-Quaternary alkaline volcanism in western Anatolia, Turkey, and implications for the Aegean mantle. *International Geology Review*, 52, 631-655. DOI: <https://doi.org/10.1080/00206810903495020>
- Dobosi, G., Fodor, R.V., 1992. Magma fractionation, replenishment, and mixing as inferred from green-core clinopyroxenes in Pliocene basanite, southern Slovakia. *Lithos*, 28, 133-150. DOI: [https://doi.org/10.1016/0024-4937\(92\)90028-W](https://doi.org/10.1016/0024-4937(92)90028-W)
- Doğan-Külahcı, G.D., Temel, A., Gourgaud, A., Demirbağ, H., 2015. Afyon Volkanik Kayaçlarının (Batı Anadolu, Türkiye) Mineralojik-Petrografik Özellikleri ve P-T Hesaplamaları. *Yerbilimleri (Earth Sciences)*, 36, 137-162.
- Duggen, S., Hoernle, K., van den Bogaard, P., Garbe-Schönberg, D., 2005. Post-collisional transition from subduction-to intraplate-type magmatism in the westernmost Mediterranean: Evidence for continental-edge delamination of subcontinental lithosphere. *Journal of Petrology*, 46(6), 1155-1201 DOI: <https://doi.org/10.1093/petrology/egi013>
- Elitok, Ö., Özgür, N., Drüppel, K., Dilek, Y., Platevoet, B., Guillou, H., Poisson, A., Scaillet, S., Satır, M., Siebel, W., Bardintzeff, J.M., Deniel, C., Yılmaz, K., 2010. Origin and geodynamic evolution of late Cenozoic potassium-rich volcanism in the Isparta area, southwestern Turkey. *International Geology Review*, 52, 454-504. DOI: <https://doi.org/10.1080/00206810902951411>
- Erkan, Y., Bayhan, H., Tolluoğlu, A.Ü., Aydar, E., 1996. Afyon Yöresi Metamorfik ve Volkanik Kayaçların Jeolojik, Petrografik ve Jeokimyasal İncelenmesi. *Türkiye Bilimsel ve Teknik Araştırma Kurumu (Tübitak), YBAG-0044/Dpt 214*.
- Erkül, F., Çolak, C., Tatar Erkül, S., Varol, E., 2019. Geology and geochemistry of the Middle Miocene Yağcıköy volcanic complex, western Turkey: Wide-rift alkaline volcanism associated with incipient stages of slab tearing. *Journal of Asian Earth Sciences*, 179, 112-126. DOI: <https://doi.org/10.1016/j.jseaes.2019.04.015>
- Ersoy, Y.E., Helvacı, C., Palmer, M.R., 2012. Petrogenesis of the Neogene volcanic units in the NE-SW-trending basins in western Anatolia, Turkey. *Contributions to Mineralogy and Petrology*, 163, 379-401. DOI: <https://doi.org/10.1007/s00410-011-0679-3>
- Ersoy, E.Y., Palmer, M.R., Genç, C., Prelević, D., Akal, C., Uysal, İ., 2017. Chemo-probe into the mantle origin of the NW Anatolia Eocene to Miocene volcanic rocks: Implications for the role of, crustal accretion, subduction, slab rollback and slab break-off processes in genesis of post-collisional magmatism. *Lithos*, 288-289, 55-71. DOI: <https://doi.org/10.1016/j.lithos.2017.07.006>
- Fedo, C.M., Nesbitt, H.W., Young, G.M., 1995. Unraveling the effects of potassium metasomatism in sedimentary rocks and paleosols, with implications for paleoweathering conditions and provenance. *Geology*, 23, 921-924.
- Floyd, P.A., Helvacı, C., Mittweide, S.K., 1998. Geochemical discrimination of volcanic rocks associated with borate deposits: An exploration tool? *Journal of Geochemical Exploration*, 60, 185-205. DOI: [https://doi.org/10.1016/S0375-6742\(97\)00047-2](https://doi.org/10.1016/S0375-6742(97)00047-2)
- Foley, S.S., Venturelli, G., Green, D.D., Toscani, L., 1987. The ultrapotassic rocks: characteristics, classification, and constraints for petrogenetic models. *Earth-Science Reviews*, 24, 81-134.

- Francalanci, L., Innocenti, F., Manetti, P., Savaşçin, M.Y., 2000. Neogene alkaline volcanism of the Afyon-Isparta area, Turkey: Petrogenesis and geodynamic implications. *Mineralogy and Petrology*, 70, 285-312. DOI: <https://doi.org/10.1007/s007100070007>
- Grove, T.L., Donnelly-Nolan, J.M., 1986. The evolution of young silicic lavas at Medicine Lake Volcano, California: Implications for the origin of compositional gaps in calc-alkaline series lavas. *Contributions to Mineralogy and Petrology*, 92(3), 281-302. DOI: <https://doi.org/10.1007/BF00572157>
- Güleç, N., 1991. Crust-mantle interaction in western Turkey: implications from Sr and Nd isotope geochemistry of Tertiary and Quaternary volcanics. *Geological Magazine*, 128, 417-435. DOI: <https://doi.org/10.1017/S0016756800018604>
- Gündoğan, I., Yücel-Oztürk, Y., Helvacı, C., Güngör, T., Karamandersi, I.H., Koralay, O.E., 2012. Geological setting of Sandıklı (Afyon) volcanics and geochronological signature of the Karacaören syenitoid in volcanic succession. In 65th Geological Congress of Turkey, Ankara (Abstracts Book), 363.
- Helvacı, C., Alonso, R.N., 2000. Borate deposits of Turkey and Argentina; A Summary and Geological Comparison. *Turkish Journal of Earth Sciences*, 9, 1-27.
- Irvine, T.N., Baragar, W.R.A., 1971. A Guide to the Chemical Classification of the Common Volcanic Rocks. *Canadian Journal of Earth Sciences*, 8, 523-548. DOI: <https://doi.org/10.1139/e71-055>
- Karaoğlu, Ö., Helvacı, C., 2014. Isotopic evidence for a transition from subduction to slab-tear related volcanism in western Anatolia, Turkey. *Lithos*, 192-195, 226-239. DOI: <https://doi.org/10.1016/j.lithos.2014.02.006>
- Karaoğlu, Ö., Helvacı, C., Ersoy, Y., 2010. Petrogenesis and ⁴⁰Ar/³⁹Ar geochronology of the volcanic rocks of the Uşak-Güre basin, western Türkiye. *Lithos*, 119, 193-210. DOI: <https://doi.org/10.1016/j.lithos.2010.07.001>
- Keller, J., 1983. Potassic lavas in the orogenic volcanism of the Mediterranean area. *Journal of Volcanology and Geothermal Research*, 18, 321-355.
- Keller, J., Villari, L., 1972. Rhyolitic ignimbrites in the region of Afyon (Central Anatolia). *Bulletin Volcanologique*, 36, 342-358.
- Kudo, A.M., Weill, D.F., 1970. An igneous plagioclase thermometer. *Contributions to Mineralogy and Petrology* 25, 52-65. DOI: <https://doi.org/10.1007/BF00383062/METRICS>
- Le Bas, M., Maitre, R.L., Streckeisen, A., Zanettin, B., 1986. A chemical classification of volcanic rocks based on the total alkali-silica diagram. *Journal of Petrology*, 27, 745-750.
- Le Maitre, R., Streckeisen, A., Zanettin, B., Le Bas, M., Bonin, B., Bateman, P., Bellieni, G., Dudek, A., Efremova, S., Keller, J., Lamere, J., Sabine, P., Schmid, R., Sorensen, H., Woolley, A., 1989. *Igneous Rocks: A Classification and Glossary of Terms, Recommendations of the International Union of Geological Sciences, Subcommittee of the Systematics of Igneous Rocks*. Oxford: Blackwell Scientific, 193pp.
- Metin, S., Genç, Ş., Bulut, V., 1987. Afyon ve dolayının jeolojisi. MTA Raporu, No: 8103 (yayınlanmamış), 100s.
- Mitchell, R.H., Bergman, S.C., 1991. *Petrology of lamproites*, Springer US., 448pp DOI: <https://doi.org/10.1007/978-1-4615-3788-5>
- Miyashiro, A., 1978. Nature of alkalic volcanic rock series. *Contributions to Mineralogy and Petrology*, 66(1), 91-104. DOI: <https://doi.org/10.1007/BF00376089>
- Morimoto, N., 1989. Nomenclature of pyroxenes. *Mineralogical Journal*, 14, 198-221. DOI: <https://doi.org/10.2465/minerj.14.198>
- Nesbitt, H.W., Young, G.M., 1982. Early Proterozoic climates and plate motions inferred from major element chemistry of lutites. *Nature*, 299(5885), 715-717.
- Nimis, P., 1995. A clinopyroxene geobarometer for basaltic systems based on crystal-structure modeling. *Contributions to Mineralogy and Petrology*, 121, 115-125. DOI: <https://doi.org/10.1007/s004100050093>
- Nimis, P., Ulmer, P., 1998. Clinopyroxene geobarometry of magmatic rocks. Part 1: An expanded structural geobarometer for anhydrous and hydrous, basic and ultrabasic systems. *Contributions to Mineralogy and Petrology*, 133, 122-135. DOI: <https://doi.org/10.1007/S004100050442>
- Nimis, P., Taylor, W.R., 2000. Single clinopyroxene thermobarometry for garnet peridotites. Part I. Calibration and testing of a Cr-in-Cpx barometer and an enstatite-in-Cpx thermometer. *Contributions to Mineralogy and Petrology*, 139, 541-554. DOI: <https://doi.org/10.1007/s004100000156>
- Nixon, G.T., 1988. Petrology of the younger andesites and dacites of Iztaccíhuatl Volcano, Mexico: I. Disequilibrium phenocryst assemblages as indicators of magma chamber processes. *Journal of Petrology*, 29, 213-264. DOI: <https://doi.org/10.1093/PETROLOGY/29.2.213>
- Ohta, T., Arai, H., 2007. Statistical empirical index of chemical weathering in igneous rocks: A new tool for evaluating the degree of weathering. *Chemical Geology*, 240, 280-297. DOI: <https://doi.org/10.1016/j.chemgeo.2007.02.017>
- Okay, A.I., 1984. Distribution and characteristics of the north-west Turkish blueschists. London, The Geological Society, Special Publications, 17, 455-466. DOI: <https://doi.org/10.1144/GSL.SP1984.017.01.33>
- Okay, A.I., Tüysüz, O., 1999. Tethyan sutures of northern Turkey. London, The Geological Society, Special Publications, 156, 475-515. DOI: <https://doi.org/10.1144/GSL.SP1999.156.01.22>
- Ortoleva, P.J., 1990. Role of attachment kinetic feedback in the oscillatory zoning of crystals grown from melts. *Earth-Science Reviews*, 29, 3-8. DOI: [https://doi.org/10.1016/0012-8252\(0\)90023-O](https://doi.org/10.1016/0012-8252(0)90023-O)
- Özgül, N., 1976. Toroslar'ın Bazı Temel Jeoloji Özellikleri. *Bulletin of the Geological Society of Turkey*, 19, 65-78.
- Parker, A., 1970. An index of weathering for silicate rocks. *Geological Magazine*, 107, 501-504.
- Pe-Piper, G., Piper, D.J.W., 2001. Late Cenozoic, post-collisional Aegean igneous rocks: Nd, Pb and Sr isotopic constraints on petrogenetic and tectonic models. *Geological Magazine*, 138, 653-668. DOI: <https://doi.org/10.1017/s0016756801005957>

- Peccerillo, A., Taylor, S.R., 1976. Geochemistry of Eocene calc-alkaline volcanic rocks from the Kastamonu area, northern Turkey. *Contributions to Mineralogy and Petrology*, 58, 63-81. DOI: <https://doi.org/10.1007/BF00384745>
- Peccerillo, A., Poli, G., Serri, G., 1988. Petrogenesis of orenditic and kamafugitic rocks from central Italy. *The Canadian Mineralogist*, 26, 45-65.
- Platevoet, B., Scaillet, S., Guillou, H., Blamart, D., Nomade, S., Massault, M., Poisson, A., Elitok, Ö., Özgür, N., Yagmurlu, F., Yilmaz, K., 2008. Pleistocene eruptive chronology of the Gölcük volcano, Isparta Angle, Turkey. *Quaternaire*, 19, 147-156. DOI: <https://doi.org/10.4000/quaternaire.3092>
- Portner, D.E., Delph, J.R., Berk Biryol, C., Beck, S.L., Zandt, G., Özacar, A.A., Sandvol, E., Türkelli, N., 2018. Subduction termination through progressive slab deformation across Eastern Mediterranean subduction zones from updated P-wave tomography beneath Anatolia. *Geosphere*, 14, 907-925. DOI: <https://doi.org/10.1130/GES01617.1>
- Prelević, D., Foley, S.F., Romer, R.L., Cvetković, V., Downes, H., 2005. Tertiary ultrapotassic volcanism in Serbia: Constraints on petrogenesis and mantle source characteristics. *Journal of Petrology*, 46, 1443-1487. DOI: <https://doi.org/10.1093/ptrology/egi022>
- Prelević, D., Akal, C., Romer, R.L., Foley, S.F., 2010. Lamproites as indicators of accretion and/or shallow subduction in the assembly of south-western Anatolia, Turkey. *Terra Nova*, 22, 443-452. DOI: <https://doi.org/10.1111/j.1365-3121.2010.00963.x>
- Prelević, D., Akal, C., Foley, S.F., Romer, R.L., Stracke, A., Van den Bogaard, P., 2012. Ultrapotassic mafic rocks as geochemical proxies for post-collisional dynamics of orogenic lithospheric mantle: the case of southwestern Anatolia, Turkey. *Journal of Petrology*, 53, 1019-1055. DOI: <https://doi.org/10.1093/ptrology/egs008>
- Prelević, D., Akal, C., Romer, R.L., Mertz-Kraus, R., Helvacı, C., 2015. Magmatic response to slab tearing: constraints from the Afyon alkaline volcanic complex, western Turkey. *Journal of Petrology*, 56, 527-562. DOI: <https://doi.org/10.1093/ptrology/egv008>
- Putirka, K., Johnson, M., Kinzler, R., Longhi, J., Walker, D., 1996. Thermobarometry of mafic igneous rocks based on clinopyroxene-liquid equilibria, 0-30kbar. *Contributions to Mineralogy and Petrology*, 123, 92-108. DOI: <https://doi.org/10.1007/s004100050145>
- Putirka, K.D., 2008. Thermometers and barometers for volcanic systems. *Reviews in Mineralogy and Geochemistry*, 69, 61-120. DOI: <https://doi.org/10.2138/rmg.2008.69.3>
- Putirka, K., Mikaelian, H., Ryerson, F., Shaw, H., 2003. New clinopyroxene-liquid thermobarometers for mafic, evolved, and volatile-bearing lava compositions, with applications to lavas from Tibet and the Snake River Plain, Idaho. *American Mineralogist*, 88, 1542-1554. DOI: <https://doi.org/10.2138/am-2003-1017>
- Rutherford, M.J., Hill, P.M., Rutherford, M.J., Hill, P.M., 1993. Magma ascent rates from amphibole breakdown: An experimental study applied to the 1980-1986 Mount St. Helens eruptions. *Journal of Geophysical Research*, 98, 19,667-19,685. DOI: <https://doi.org/10.1029/93JB01613>
- Saraç, G., 2003. Türkiye Omurgalı Fosil Yatakları. Maden Tetkik ve Arama Genel Müdürlüğü (MTA), 100s (yayımlanmamış).
- Savaşçın, M.Y., Güleç, N., 1990. Relationship between magmatic and tectonic activities in western Turkey. *International Earth Science Colloquium on the Aegean Region (IESCA) Proceedings*, 300-313.
- Savaşçın, M.Y., Oyman, T., 1998. Tectono-magmatic evolution of alkaline volcanics at the Kırka-Afyon-Isparta structural trend, SW Turkey. *Turkish Journal of Earth Sciences*, 7, 201-214.
- Scarrow, J.H., Cox, K.G., 1995. Basalts generated by decompressive adiabatic melting of a mantle plume: A case study from the Isle of Skye, NW Scotland. *Journal of Petrology*, 36, 3-22. DOI: <https://doi.org/10.1093/ptrology/36.1.3>
- Seghedi, I., Helvacı, C., 2016. Early Miocene Kırka-Phrigian Caldera, western Turkey (Eskişehir province), preliminary volcanology, age and geochemistry data. *Journal of Volcanology and Geothermal Research*, 327, 503-519. DOI: <https://doi.org/10.1016/j.jvolgeores.2016.09.007>
- Şengör, A.M.C., Yılmaz, Y., 1981. Tethyan evolution of Turkey: A plate tectonic approach. *Tectonophysics*, 75, 181-241. DOI: [https://doi.org/10.1016/0040-1951\(81\)90275-4](https://doi.org/10.1016/0040-1951(81)90275-4)
- Servais, M., 1982. Collision et suture Téthysienne en Anatolie Centrale, Etude structurale et métamorphique (HB-BT) de la zone nord Kütahta. PhD Thesis. Orsay University, France, 349.
- Simonetti, A., Shore, M., Bell, K., 1996. Diopside phenocrysts from nephelinite lavas, Napak volcano, eastern Uganda: Evidence for magma mixing. *The Canadian Mineralogist*, 34, 411-421.
- Sun, S., McDonough, W., 1989. Chemical and isotopic systematics of oceanic basalts: implications for mantle composition and processes. London, The Geological Society, Special Publications, 4, 313-345.
- Sunder, M., 1982. Geology of the Kırka (Eskişehir) region and the formation of Sakarya borate deposits. *Tübitak VII bilim Kong*, 105-107.
- Telsiz, S., 2011. Eskişehir Yöresindeki Volkanik Kayaçların Petrolojisi ve Jeokimyası. PhD Thesis. Hacettepe University, 185pp
- Uzel, B., Kuiper, K., Sözbilir, H., Kaymakci, N., Langereis, C.G., Boehm, K., 2020. Miocene geochronology and stratigraphy of western Anatolia: Insights from new Ar/Ar dataset. *Lithos*, 352-353, 42p. DOI: <https://doi.org/10.1016/j.lithos.2019.105305>
- Vernon, R.H., 2014. Microstructures of microgranitoid enclaves and the origin of S-type granitoids. *Australian Journal of Earth Sciences*, 61, 227-239. DOI: <https://doi.org/10.1080/08120099.2014.886623>
- Woolley, A.R., Berman, S.C., Edgar, A.D., Le Bas, M.J., Mitchell, R.H., Rock, N.M.S., Scot Smith, B.H., 1996. Lamproites, Classification Rocks and Leucitic Melilitic, and the Kalsilitig. *The Canadian Mineralogist*, 34, 175-186.

Yağmurlu, F., Savaşın, Y., Ergün, M., 1997. Relation of Alkaline Volcanism and Active Tectonism Within the Evolution of the Isparta Angle, SW Turkey. *The Journal of Geology*, 105, 717-728. DOI: <https://doi.org/10.1086/515978>

Yalçın, H., 1989. Kırka (Eskişehir) Yöresi Volkanosedimanter Oluşumlarının Mineralojik-Petrografik ve Jeokimyasal İncelenmesi. PhD thesis. Hacettepe Üniversitesi, 269pp

Yılmaz, Y., 1989. An Approach to the Origin of Young Volcanic Rocks of Western Turkey. In Şengör, A.M.C. (eds) *Tectonic Evolution of the Tethyan Region*, 159-189. DOI: https://doi.org/10.1007/978-94-009-2253-2_10

Manuscript received February 2023;
revision accepted March 2024;
published Online May 2024.